

**MOVING
ACADIANA:
TRANSPORTATION
IMPROVEMENT
PROGRAM**

ACADIANA
METROPOLITAN
PLANNING
AREA

Fiscal Years: 2019, 2020, 2021, & 2022

Date of Adoption:
Metropolitan Planning Organization
For Acadiana Metropolitan Study Area

TRANSPORTATION IMPROVEMENT PROGRAM
Amendments/Modifications in Detail

| State Project Number | Project Description | Proposed Improvement | Work Status | Total Cost | Federal Share | Funding | Let | Amendment/Modification number | Explanation of Amendment |
|----------------------|---------------------|----------------------|-------------|------------|---------------|---------|------|-------------------------------|--------------------------|
| | | | | | | Source | Date | | |
| | | | | | | | | | |

| TABLE OF CONTENTS | Page |
|---|------|
| Title page..... | 1 |
| Recordation of amendments and administrative modifications in detail..... | 2 |
| Table of Contents..... | 3 |
| Introduction..... | 4 |
| Map of MPO Urban Area..... | 5 |
| Definitions, Acronyms and Technical Terms..... | 6 |
| Joint Certification..... | 10 |
| TIP Reference..... | 11 |
| TIP Development Process..... | 12 |
| <u>TIP PROJECTS — STATE HIGHWAY ELEMENT</u> | |
| Year One (FY 2019)..... | 16 |
| Year Two (FY 2020)..... | 18 |
| Year Three (FY 2021)..... | 19 |
| Year Four (FY 2022)..... | 20 |
| <u>TIP PROJECTS — CALL FOR PROJECTS ELEMENT</u> | |
| Year One (FY 2014)..... | 21 |
| Year Two (FY 2015)..... | 22 |
| Year Three (FY 2016)..... | 23 |
| Year Four (FY 2017.)..... | 24 |
| <u>TIP PROJECTS — STATE HIGHWAY ELEMENT – (Other/Generic/Safety/Maintenance)</u> | |
| Year One (FY 2019)..... | 25 |
| Year Two (FY 2020)..... | 26 |
| Year Three (FY 2021)..... | 27 |
| Year Four (FY 2022)..... | 28 |
| Itemized Line Item Projects..... | 29 |
| <u>TIP PROJECTS — TRANSIT ELEMENT</u> | |
| Year One (FY 2019)..... | 31 |
| Year Two (FY 2020)..... | 32 |
| Year Three (FY 2021)..... | 33 |
| Year Four (FY 2022)..... | 34 |
| <u>TIP PROJECTS — LOCAL PROJECTS ELEMENT</u> | |
| Major Non-State Road Project Portion..... | 35 |
| Appendix A The Tip Package (Resolutions)..... | 36 |

INTRODUCTION

Transportation Improvement Program (TIP)

The *Transportation Improvement Program* (TIP) is a staged, multi-year program of improvements scheduled for the Acadiana Metropolitan Planning Area. The Acadiana Planning Commission, being the state-designated Metropolitan Planning Organization (MPO) for the Acadiana Metropolitan Area, is responsible for the development of this document. This document is a cooperative effort between the Louisiana Department of Transportation and Development and the Acadiana MPO. The STIP is the statewide counterpart to the TIP.

Compliance with the FAST (Fixing America's Surface Transportation act): (FAST)

The Safe, Affordable, Flexible, Efficient Transportation Equity Act: A Legacy for Users of 2019 (FAST) was designed to direct the development of a “national intermodal transportation system that is economically efficient and sound, provides the foundation for the nation to compete in a global economy, and will move people and goods in an energy efficient manner.” The TIP plays an integral part in this mission by providing a party list of projects and project segments to be constructed within a four (4) year period following the program's adoption. Because of the passage of FAST, the TIP must:

1. Incorporate all improvements to be completed within the Metropolitan Area, including Public Transit, Pedestrian and Bikeway improvements, Safety Improvements, and Enhancements;
2. Incorporate a financial plan that demonstrates that the projects selected can be implemented within the defined time frames;
3. Incorporate a priority list of projects to be carried out in each year of a four-year period;
4. Include transportation projects that are consistent with the long-range transportation plan approved and adopted for the Metropolitan Area.

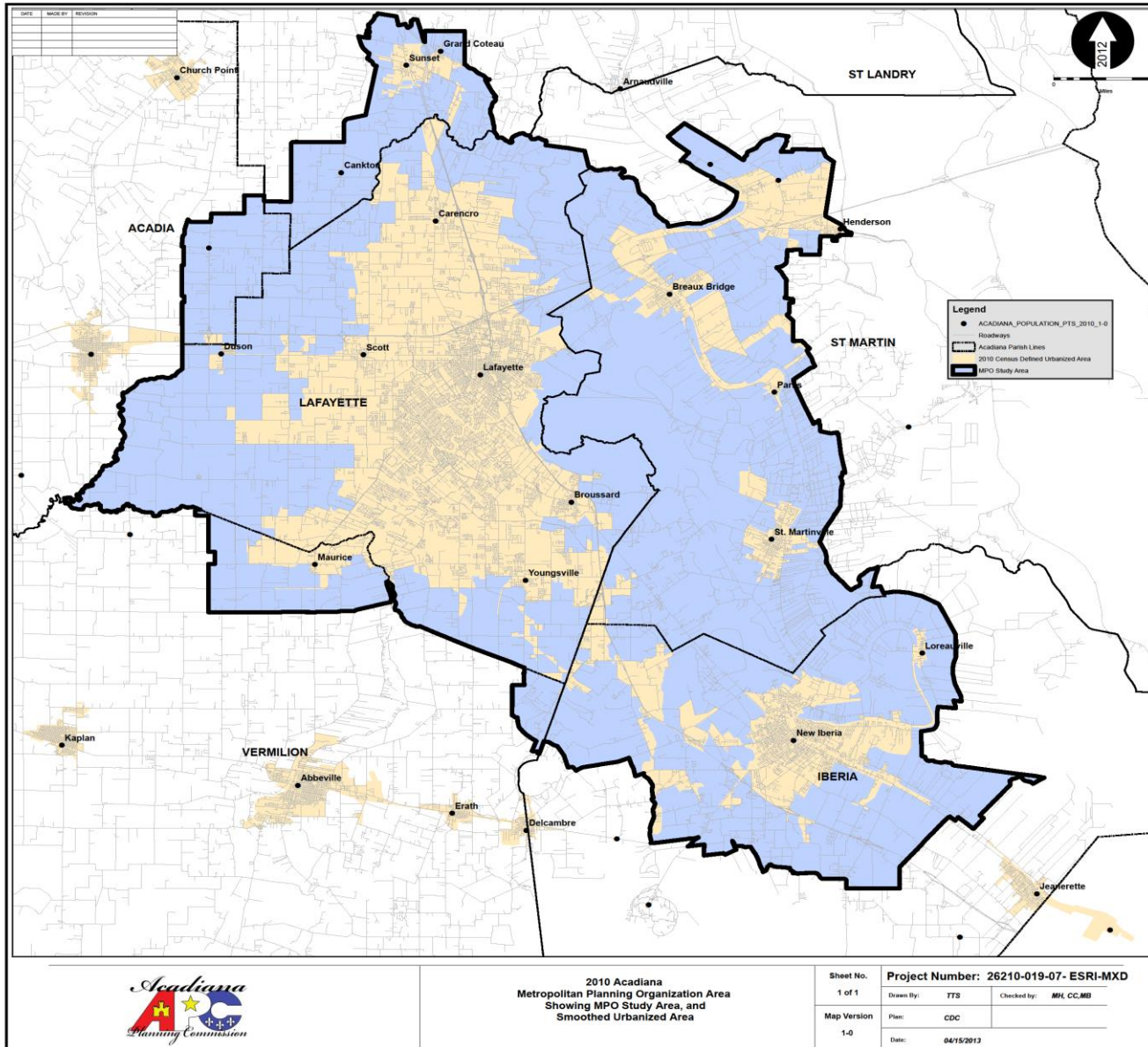
Compliance with the Financial Plan Requirement

All the projects listed within the program, with exception of transportation enhancements, have identified sources of federal, state, or local revenues. Transportation Enhancement projects are included within this document in response to application requirements which establish listing of projects in the adopted TIP as a prerequisite to consideration for funding.

Projects Adoption Procedure

The Citizen Advisory Committee (CAC) is charged with reviewing transportation related issues and advising such to the TTC. The Transportation Technical Committee (TTC) is charged with the responsibility of reviewing and recommending for adoption the proposed program of projects to be covered within this document. The Transportation Policy Committee (TPC), charged with the responsibility of adopting the proposed program, has the final recommending authority on all projects involving Federal or State funding. Once the TIP program is adopted, it is submitted to the Louisiana Department of Transportation and Development and the Governor for approval and inclusion into the State of Louisiana Transportation Improvement Program.

MPO URBAN AREA



DEFINITIONS

Arterial Street – A major street, primarily for through traffic, characterized by a high traffic volume capacity coupled with unlimited access to adjacent streets, not designed as a highway.

Area Source – Small stationary and non-transportation pollution sources that are too small and numerous to be included as point sources but may collectively contribute to air pollution.

CAAA: Clean Air Act Amendments of 1990 – Legislation that identifies mobile sources as a major source of pollution and calls for stringent new requirements in metropolitan areas and states where attainment of the NAAQS is contested.

Carbon Monoxide (CO) – A colorless, odorless, tasteless gas formed in a large part by the incomplete combustion of fuel.

Emission Inventory – A complete list of sources and amounts of pollution within a specific area and time interval.

EPA: The Environmental Protection Agency – Federal agency created in the *Environmental Protection Act of 1970* that is responsible for enforcing, monitoring, and maintaining federal environmental laws.

Federal Aid Urbanized Area – An area that contains at least 50,000 people and has sufficient population density to be classified as urban by the Federal Highway Administration.

FHWA: The Federal Highway Administration – An agency of the U.S. Department of Transportation with jurisdiction over highway and bridges. FHWA administers the Federal Lands Highway program.

ISTEA (Intermodal Surface Transportation Efficiency) Act of 1991 A major piece of Federal legislation that implements broad changes in the way transportation decisions are made. ISTEA emphasizes diversity and balance of modes and the preservation of existing systems. It imposes a series of environmental, social and energy factors that must be considered in planning, programming, and selection of projects.

La DEQ: The Louisiana Department of Environmental Quality – The State of Louisiana agency with jurisdiction over environmental regulation.

La DOTD: Louisiana Department of Transportation and Development – The State of Louisiana agency with jurisdiction over transportation.

Level of Service (LOS) – A combination of operating conditions of a given facility that allows it to accommodate Traffic Volumes.

Fixing America's Surface Transportation act (FAST) – Most recent Transportation Bill adopted on December 4, 2015.

Metropolitan Boundaries – The area represented by the existing urbanized area and the contiguous area forecasted to be urbanized in a 20-year horizon for the region. The area may include the entire metropolitan statistical area as designated by the Bureau of the Census or

another area as agreed upon by the governor and MPO. Unless agreed upon by the metropolitan organization and the governor, the area must also include the area of nonattainment of the NAAQS as defined by the CAAA.

Metropolitan Area – An area with a population of at least 50,000 as defined by the Bureau of the Census.

MPO: The Metropolitan Planning Organization – An organization established by the Governor and units of local government which represent 75% of the affected population to carry out the transportation planning process as required in the Section 134 of Title 23 of the United States Code as defined by Moving ahead for Progress in the 21st century (FAST).

Mobile Source – Mobile sources include motor vehicles, aircraft, seagoing vessels, and other transportation modes. The mobile source related pollutants are carbon monoxide (CO), hydrocarbon (HC), oxides of nitrogen (NOx), and small particulate matter (PM₁₀).

National Ambient Air Quality Standards (NAAQS) – Federal standards that set allowable concentrations and exposure limits for various pollutants. The standards are developed by the Environmental Protection Agency (EPA) in response to the requirements of the Clean Air Act and subsequent amendments.

Nonattainment Area – A geographic region of the United States that has been designated not complying with the NAAQS by the EPA.

Ozone (O₃) – Ozone is a colorless gas with a sweet odor. It is not a direct emission from transportation sources. Ozone is a secondary pollutant formed when hydrocarbons and oxides of nitrogen combine in sunlight. The ozone is associated with smog and haze conditions. Although the ozone in the upper atmosphere protects us from harmful ultraviolet sunlight, ground level ozone produces an unhealthy environment in which to live.

Stage II Vapor Recovery System – A program designed to reduce hydrocarbon emissions during refueling.

State Implementation Plan (SIP) – A plan mandated by the Clean Air Act and subsequent amendments that contains procedures to monitor, control, maintain, and enforce compliance with NAAQS.

TRANSPORTATION CONTROL MEASURES (TCM) – Specific measures that reduce emissions by reducing vehicle use and/or controlling traffic flow.

TRANSPORTATION DEMAND MANAGEMENT (TDM) – Specific measures that reduce demand for transportation demand by promoting transit and/or utilizing work hours.

TEP – The Transportation Enhancement Program that is a federally funded program administered through the LA DOTD. It aims to build a more balanced transportation system that includes sidewalks for pedestrians and bike-path for bicyclists and any mobility impaired person using a wheel chair. It can include safety and educational activities for pedestrians and bicyclists, landscaping and other scenic beautification, historic preservation, acquisition of scenic easements and scenic or historic sites, preservation of abandoned railway corridors,

scenic or historic highway programs including the provision of tourist and welcome center facilities, archaeological planning and research, control and removal of outdoor advertising, environmental mitigation and establishment of transportation museums.

To simplify the reading of this document, a following list of the commonly used abbreviations is provided:

| <u>Abbreviation</u> | <u>Translation</u> |
|---------------------|--|
| AS | Alignment Study |
| ADT | Average Daily Traffic |
| BEP | Bike, Equestrian, and Pedestrian Project |
| UPWP | Unified Planning Work Program |
| TIP | Transportation Improvement Program |
| SIP | State Implementation Plan for Air Quality Attainment |
| LMATS | Lafayette Metropolitan Area Transportation Study 1992-2012 |
| STP | Strategic Thoroughfare Plan Map |
| CTP | Consolidated Thoroughfare Plan Map |
| CIP | Capital Improvements Plan |
| FCTP | Financially Constrained Transportation Plan 2000-2030 |
| MMTI | Major Metropolitan Transportation Investment Study |
| TEP | Transportation Enhancement Program Submitted to Obtain Federal Enhancement Funds |
| CAC | Citizen Advisory Committee |
| TTC | Transportation Technical Committee |
| TPC | Transportation Policy Committee |
| LCG | Lafayette Consolidated Government |
| MPO | Metropolitan Planning Organization |
| La DOTD or DOTD | Louisiana Department of Transportation and Development |
| LaDEQ or DEQ | Louisiana Department of Environmental Quality |
| DOT | The U.S. Department of Transportation |
| FHWA | Federal Highway Administration |
| FTA | Federal Transit Administration |
| EIS | Environmental Impact Statement |
| EA | Environmental Assessment |
| EPA | Environmental Protection Agency |
| ISTEA | Inter-modal Surface Transportation Efficiency Act of 1991 |
| CAAA | Clean Air Act Amendments of 1990 |
| TEA21 | Transportation Equity Act of the 21 st Century |
| NHS | National Highway System Funding Part of the ISTEA |
| IM | Interstate Maintenance Part of the ISTEA |
| HBRP | Bridge Replacement Part of the ISTEA |

Abbreviation

| | |
|-------|--|
| STP | Surface Transportation Program Funding Part of the ISTEA |
| SRH | Street, Road, and Highway Project |
| RUD | Road Utility District |
| RPC | Regional Planning Commission |
| TMA | Transportation Mitigation Area |
| TRN | Transit Project |
| TCM | Technical Committee Meeting |
| CMA | Congestion Mitigation Area |
| AQ | Air Quality |
| V/C | Volume to Capacity Ratio |
| VMT | Vehicle Miles Traveled |
| HPMS | Highway Performance Monitoring System |
| CO | Carbon Monoxide |
| NOX | Nitrogen Oxide |
| VOC | Volatile Organic Compounds |
| NAAQS | National Ambient Air Quality Standard |
| PE | Preliminary Engine |
| ITS | Intelligent Transportation System |

Translation

| |
|--|
| Surface Transportation Program Funding Part of the ISTEA |
| Street, Road, and Highway Project |
| Road Utility District |
| Regional Planning Commission |
| Transportation Mitigation Area |
| Transit Project |
| Technical Committee Meeting |
| Congestion Mitigation Area |
| Air Quality |
| Volume to Capacity Ratio |
| Vehicle Miles Traveled |
| Highway Performance Monitoring System |
| Carbon Monoxide |
| Nitrogen Oxide |
| Volatile Organic Compounds |
| National Ambient Air Quality Standard |
| Preliminary Engine |
| Intelligent Transportation System |

**Joint Certification of the Metropolitan
Transportation Planning Process**

In accordance with the federal legislation, 23 Code of Federal Regulations 450.334 and the Moving Ahead for Progress in the 21st Century Act (MAP-21), the Louisiana Department of Transportation and Development (LADOTD), and MPO Planning Council of Governments (MPO) for the Lafayette urbanized area hereby certify that the transportation planning process is addressing the major issues in the metropolitan planning area and is being conducted in accordance with all applicable requirements of:

1. 23 U.S.C. 134, 49 U.S.C. 5303, and this subpart;
2. In nonattainment and maintenance areas, sections 174 and 176 (c) and (d) of the Clean Air Act, as amended (42 U.S.C. 7504, 7506 (c) and (d) and 40 CFR part 93;
3. Title VI of the Civil Rights Act of 1964 as amended (42 U.S.C. 2000d-1) and 49 CFR part 21;
4. 49 U.S.C. 5332, prohibiting discrimination on the basis of race, color, creed, national origin, sex, or age in employment or business opportunity;
5. Section 1101 (b) of MAP-21 (Pub. L. 112-141) and 49 CFR part 26 regarding the involvement of disadvantaged business enterprises in USDOT funded projects;
6. 23 CFR part 230, regarding the implementation of an equal employment opportunity program on Federal and Federal-aid highway construction contracts;
7. The provisions of the Americans with Disabilities Act of 1990 (42 U.S.C. 12101 et seq.) and 49 CFR parts 27, 37, and 38;
8. The Older Americans Act, as amended (42 U.S.C. 6101), prohibiting discrimination on the basis of age in programs or activities receiving Federal financial assistance;
9. Section 324 of the title 23 U.S.C. regarding the prohibition of discrimination based on gender; and
10. Section 504 of the Rehabilitation Act of 1973 (29 U.S.C. 794) and 49 CFR part 27 regarding discrimination against individuals with disabilities

for Eric Kulas

for Sherri Lebas, Secretary
Louisiana Department of
Transportation and Development

3/13/15

DATE

Andy Naquin

Andy Naquin, Chair
Lafayette MPO Technical Policy Committee

2/25/15

DATE

TRANSPORTATION IMPROVEMENT PROGRAM (TIP) REFERENCE

Improvements listed in this **TIP** are defined by the following:

- A. Improvement Name: Generally, the name of the improvement is referenced by a local street, road, or highway. State Projects may include a “Route Number.”
- B. Improvement Description: Describes the transportation improvement.
- C. Improvement State: All improvements are implemented through a staged process that has a beginning and an end. This reference identifies what working stage, out of four, the transportation improvement is in.
- D. Improvement Length: Most transportation improvements reflect linear measurements or the distance (length) of the project from point A to point B. When applicable, this reference identifies the distance in miles and kilometers.
- E. Federal/State/Local Funds: Federal, State, and Local transportation improvement agencies have different funding categories or “funds” available through various programs. This reference helps identify the specific program fund source for the project.
- F. Stage Cost/Total Cost: Transportation improvement projects can take five, ten or more years to complete. This reference identifies the estimated or projected cost for the entire project and the budget funding allocation for the improvement staged in the current transportation program year.
- G. Federal/State/Local: The three primary financial sources for funding the Total Cost of transportation improvements that are Transportation Funding: identified with the dollar amounts contributed. Private contributions are included under the local column.
- H. Sponsoring Agency: Every transportation improvement has a coordinating or sponsoring agency. Several funding sources may be involved, but usually there is one lead agency responsible for a transportation improvement at any given time.
- I. LA DOTD ID Number: The Louisiana Department of Transportation and Development requires a state transportation project number on all improvements with state or state funding participation.
- J. Federal ID Number: The Louisiana Department of Transportation and Development requires a state transportation project number on all improvements with federal funding participation.
- K. Local ID Number: Where a Federal or LA DOTD number was not applicable, a local project number was assigned to the project. This number corresponds to project numbers found within the sponsoring agency’s designated Capital Improvements Program.

The TIP Development Process

Financial Constraint

The projects contained in the Transportation Improvement Program (TIP) (FY 2019-2022) are derived from Acadiana's overall 25-year transportation plan. Both the TIP and the *Financially Constrained Transportation Plan* (FCTP) have been financially constrained to reflect realistic and available levels of project funding.

The projects shown for advancement in this TIP were fully discussed with the Transportation Technical Committee (TTC) and the Transportation Policy Committee (TPC). State and Federally funded projects were mutually agreed upon with DOTD as to overall merit and funding availability for inclusion in the State TIP (*STIP*).

Based on financial data obtained from DOTD, Acadiana has averaged about \$8,475,464 annually in Federal and State funding, including Interstate funds. A computerized record of all authorized projects covering a 20-year period was obtained from DOTD.

Projects shown for urban systems greater than "200 k" (areas greater than 200,000 population) funding are also financially constrained, reflecting the annual attributable amount (approximately \$6,000,000 in FY19-22). This \$6,000,000 requires a 20% local match. If the project in question is a State project sometimes the state will provide the local match. In all other projects is incumbent upon the MPO to find the match.

Transit

On the transit side, majority of the project funding is based on (**Section 5307 FTA Formula**) formula grant for *operating assistance and capital acquisition* that is identified annually in the **Federal Register** as being approximately \$500,000 for the Acadiana Urbanized Area. Additional *discretionary capital grant* (**Section 5339 FTA Discretionary**) averaging \$200,000 has been applied to various transit projects in the last four years.

Matching funds for transit projects come from the entity requesting. Non-formula federal funds (**Section 5339 FTA Discretionary**) are only programmed if these projects are in a high priority area such as bus replacement, bus facilities, or if the projects are identified in current or pending *congressional* authorizations. In summary, the projects contained in the TIP reflect a single agreed upon master program of projects that was developed jointly with the local governments and the Louisiana State Department of Transportation and Development. The Acadiana MPO has placed high priority on projects intended to improve the overall economic competitiveness of the area, particularly those projects which significantly enhance the overall movement efficiency of goods and resources.

Prioritization of Projects

The Acadiana Planning Commission, in close consultation and cooperation with LA DOTD, prepares a draft of the TIP document whenever it is amended. This amended document is widely distributed for public review and comments (see public involvement section) and is presented to the MPO's transportation committees for review, comment, and concurrence. In addition to local planning and public works professionals, the

Transportation Technical Committee consists of representatives from modal agencies, including airport and public transit officials. A roster of the Transportation Technical Committee (TTC), and Transportation Policy Committee (TPC) Memberships is listed in Appendix B. Projects contained in the TIP document are organized in accordance with the federal fiscal year that begins October 1, 2014. The TIP covers the four-year period: FY 2018-2019; FY2019-2020; FY2020-2021; and, FY 2021-2022. The TIP may also show future years.

Wherever possible, construction let dates are shown to advise local officials and the public as to when construction is likely to begin. The Acadiana Planning Commission staff works very closely with LA DOTD staff and other vested entities to establish realistic project priorities, based on where the project rests in the implementation pipeline. Meetings are held with La DOTD to monitor the actual status of TIP projects and scheduled letting dates. These meetings are called Whiteboard meetings and are held on an annual basis. These meetings have helped Acadiana to establish firm project priorities rather than “paper” priorities. This review considers important factors such as the status of environmental clearances, survey work, preliminary plans, right-of-way, utilities, advance checkpoints and final plan preparation. When taken together, these criteria establish the relevant let date and therefore the priority order for implementation of TIP projects. The cost of the project, type of funding, and the availability of proposed funding are also considered in priority setting. The above project information is made available to the Technical Committee, or the public upon request, and project work status is utilized extensively in establishing the priority program. The draft TIP is also presented to the TTC and TPC for review and input, along with any citizens’ comments received prior to finalization of priorities.

The *Acadiana MPO's Project Selection process* has been newly created since the MPO's transition to >200K. The MPO receives approximately \$6,000,000 per year under the STP > 200K funding source. Of this money about \$4,000,000 will be allocated to projects that qualify and are selected through this process (funding amounts subject to change). The MPO accepts applications for federal funds through local and regional government jurisdictions. Entities that fill out applications must work with the local respective municipality they are in or the Louisiana Department of Transportation to sponsor a project.

Solicitation letters and project applications will be sent annually to the jurisdictions within the MPO area. The MPO will give the jurisdictions an adequate amount of time to process the applications and return. After returning the Projects will be graded according to the matrix in the *TIP Handbook*. The recommendations of the MPO will be vetted first through the Project Evaluation Subcommittee, then adopted through normal MPO Process. Jurisdictions acting as the Local Public Agency (LPA) will be responsible for these projects. The TIP and these LPA projects will be reviewed semi-annually for reasonableness. If projects are deemed to be non-compliant in advancement, then they will be removed or pushed back into a later fiscal year.

Relationship of TIP to Long-Range Transportation Plan

Projects contained in Acadiana MPO’s TIP have evolved through the transportation planning process. This analysis process is based on the seven planning factors contained in *Fixing America’s Surface Transportation act (FAST)*. These factors and the resulting analysis are utilized by the Planning Staff in the development of an integrated transportation plan and TIP for the Acadiana Metropolitan Planning Area. The 2040 Financially Constrained Transportation Plan (FCTP), contains comprehensive discussions as to how these factors are being specifically applied in the Urban Area to develop a transportation system that facilitates the efficient, economic movement of people and goods.

Relationship of the TIP to the Air-Quality Conformity

On October 14, 1994, the Acadiana Urbanized Area was re-designated as an Air Quality (ozone) Attainment with Minimal Maintenance area by the U.S. Environmental Protection Agency. This designation reflects the fact that the Acadiana Metropolitan Area suffered some ozone problems in the 1970 and 80's but has met the *National Ambient Air Quality Standards* (NAAQS) in recent years. This designation recognizes the area's new status as an Attainment Area but requires a continued review of projects likely to have detrimental air quality impacts.

The previous TIP as adopted March 27, 2015 and the Financially Constrained Transportation Plan (FCTP) (Long-Range Transportation Plan) were analyzed for their conformity with the *State Implementation Plan* for Air Quality Attainment (SIP) and with each amendment to these Plans. The Air Quality Conformity Analysis outcome being consistent with the *Clean Air Act Amendments of 1990* (CAAA) to conformity regulations indicated that FCTP and TIP resulted in a net air quality benefit to the region.

The previous TIP projects are consistent with the FCTP and with only minor exceptions were included in the previous Conformity Analysis. The regionally significant projects added, that will increase capacity, have been tested for Air Quality conformity. All other amendments have been for either projects that fall within categorical exclusions, represent minor reprioritization of existing projects, or are not regionally significant. Projects involving roadway reconstruction work were included for 2019-2022.

Therefore, the Transportation Policy Committee of the Metropolitan Planning Organization for the Acadiana MPO has determined that the FY2019-2022 TIP is substantially identical to the TIP and FCTP in the Air Quality Conformity Analysis and therefore is in conformity with the STIP.

Public Involvement

Citizen participation has been encouraged throughout the formulation of the TIP, FCTP, and CTP. The Metropolitan Planning Organization has made use of local newspapers, neighborhood meetings and extensive mail outs to inform citizens regarding the planning process, the transportation plans, important projects, and to promote alternative transportation modes. On its own initiative, several publications of project maps were displayed by the MPO at locations throughout Acadiana. As for specific projects, special meetings were scheduled and held to address the public's concerns.

The MPO has also made use of local newspapers to inform the public of important regional projects and to promote alternative transportation modes including transit bus service, bicycling, etc. Public meeting notices on the FCTP, CTP and TIP, any amendments thereto, and the Acadiana MPO's *Unified Planning Work Program* (UPWP) for Transportation Planning are placed at various public site locations for citizen review and comment.

Distribution of TIP Document for Public Review

Copies of the draft TIP were placed at nine governmental offices and libraries throughout the metropolitan area at least 15 days prior to adoption by the Transportation Policy Committee for citizen review, input and comment. The public is also afforded the opportunity to express their comments directly to the Citizen Advisory Committee, Transportation Technical Committee, and Transportation Policy Committee for the Metropolitan Study Area on the TIP document prior to official action.

Project Listings

The following tables represent both the Highway Element, Call for Projects Element, and the Transit Element, all covering the same period for the TIP. Additionally, a table with projects let in previous years is included in the Appendix. All projects that were in the previous TIP having been authorized are listed. Because of the timing of the TIP, a listing of the projects that are scheduled for authorization in the last quarter will be included. This list will contain a note that some of the projects may carry over to the next fiscal year. This note allows the DOTD to reschedule projects in the last quarter, after the TIP has been completed, without having to amend the TIP. Secondly, a list of projects that have been removed from the TIP will be included. This is important in identifying projects that may affect the conformity for nonattainment and maintenance areas or projects that cannot be scheduled for various reasons. This section will illustrate the project and the reason for project moving as well as the regional significance of this project.

While every effort has been made to develop this document using the latest information available at the time, it is recognized that there are uncertainties in the development of projects, right-of-way acquisition, relocation of utilities, acquisition of permits, costs, funding availability, etc. Therefore, the Policy Committee has no objection to phases of projects moving with the TIP of STIP as necessitated by the situation and gives its approval to the MPO staff to make those necessary changes without action by the Policy Committee.

STATE HIGHWAY ELEMENT

TRANSPORTATION IMPROVEMENT PROGRAM

Lafayette Urbanized Area – (Financially Constrained)

FY 2019 (Begin Oct. 2018) State Project Highway Element

| State Project Number | Project Description | Proposed Improvement | Work Status | Total Cost | Cost estimate | Contingency 10% of cost estimate | Federal Share | Funding Source | Local Match (5-20%) | Let Date |
|----------------------|--|---|-------------|--------------------|---------------|-------------------------------------|-------------------|----------------|---------------------|----------|
| (HSIP) | | | | | | | | | | |
| H.010353 | US 167: ACCESS MANAGEMENT (LFT TURN LNS) | Construct Left Turn Lanes | CONST | 10,560,000 | 9,600,000 | 960,000 | 9,504,000 | HSIP | 1,056,000 | FY19 |
| <i>Subtotal</i> | | | | 10,560,000 | | | 9,504,000 | | 1,056,000 | |
| (STPFLEX) | | | | | | | | | | |
| H.012304 | LCG ROAD OVERLAY PROGRAM | Overlay 7 Roadways | CONST | 3,960,000 | 3,600,000 | 360,000 | 3,168,000 | STPFLEX | 792,000 | FY19 |
| H.011988 | LA 86: BAYOU TECHE MB REHAB (HBI) | Bridge Rehabilitation | STUDY | 150,000 | NA | NA | 120,000 | STPFLEX | 30,000 | FY19 |
| H.011991 | LA 86: BAYOU TECHE MB DASPIT REHAB (HBI) | Bridge Rehabilitation | STUDY | 150,000 | NA | NA | 120,000 | STPFLEX | 30,000 | FY19 |
| H.012738 | NELSON CANAL & MORBIHAN BRIDGE REHAB (HBI) | Bridge Rehabilitation | STUDY | 300,000 | NA | NA | 240,000 | STPFLEX | 60,000 | FY19 |
| H.011990 | LA 92: VERMILION RIVER MB REHAB (HBI) | Bridge Rehabilitation | STUDY | 150,000 | NA | NA | 120,000 | STPFLEX | 30,000 | FY19 |
| H.011995 | LA 96: BAYOU TECHE MB REHAB (HBI) | Bridge Rehabilitation | STUDY | 150,000 | NA | NA | 120,000 | STPFLEX | 30,000 | FY19 |
| <i>Subtotal</i> | | | | 4,860,000 | | | 3,888,000 | | 972,000 | |
| (HSIPPEN) | | | | | | | | | | |
| H.010962 | I-10: CABLE BARRIER (LAFAYETTE/ACADIA) | Construct Cable barrier in the Median of I-10 | CONST | 6,070,350 | 5,518,500 | 551,850 | 6,070,350 | HSIPPEN | 0 | FY19 |
| <i>Subtotal</i> | | | | 6,070,350 | | | 6,070,350 | | 0 | |
| (NHPP) | | | | | | | | | | |
| H.010601 | I-10: LA 328 TO LA 347 | Widening/Overlay | CONST | 112,090,000 | 101,900,000 | 10,190,000 | 94,501,000 | NHPP | 17,589,000 | FY19 |
| H.011485 | LA 336-1: BAYOU TECHE BRIDGE REHAB (HBI) | Bridge Rehabilitation | ENGR | 75,000 | NA | NA | 60,000 | NHPP | 15,000 | FY19 |
| H.011485 | LA 336-1: BAYOU TECHE BRIDGE REHAB (HBI) | Bridge Rehabilitation | CONST | 1,650,000 | 1,500,000 | 150,000 | 1,320,000 | NHPP | 330,000 | FY19 |
| <i>Subtotal</i> | | | | 113,815,000 | | | 95,881,000 | | 17,934,000 | |

STATE HIGHWAY ELEMENT

TRANSPORTATION IMPROVEMENT PROGRAM

Lafayette Urbanized Area – (Financially Constrained)

FY 2019 (Begin Oct. 2018) State Project Highway Element

| State Project Number | Project Description | Proposed Improvement | Work Status | Total Cost | Cost estimate | Contingency 10% of cost estimate | Federal Share | Funding Source | Local Match | Let Date |
|---|---|---|-------------|--------------------|---------------|-------------------------------------|--------------------|----------------|-------------------|----------|
| (STP URBAN>200) | | | | | | | | | | |
| H.011833 | ST. MARY STREET SIDEWALKS | Sidewalk Construction | CONST | 3,960,000 | 3,600,000 | 360,000 | 3,168,000 | STP>200k | 792,000 | FY19 |
| H.009500 | 2040 PLAN IMPL & I-49 ACTION PLAN | Plan Development and Studies | N/A | 350,000 | NA | NA | 280,000 | STP>200k | 70,000 | FY19 |
| H.012792 | LA. 675 @ AIRPORT RD. ROUNDABOUT | Construct Roundabout | CONST | 2,750,000 | 2,500,000 | 250,000 | 2,200,000 | STP>200K | 550,000 | FY19 |
| H.011832 | US 90: CAMERON ST. OVERLAY | Overlay | CONST | 2,779,465 | 2,526,786 | 252,679 | 2,223,572 | STP>200k | 555,893 | FY19 |
| H.012863 | CYPRESS ISLAND HWY PAVEMENT PRESERVATION | Pavement Preservation | CONST | 1,278,828 | 1,162,571 | 116,257 | 959,121 | STP>200k | 319,707 | FY19 |
| H.012863 | CYPRESS ISLAND HWY PAVEMENT PRESERVATION (Additional Local funds) | | | | | | | | 85,255 | FY19 |
| H.012866 | SOUTH COLLEGE RD (LA 3025) SIDEWALKS | Construct sidewalks | CONST | 715,633 | 650,575 | 65,058 | 572,506 | STP>200K | 143,127 | FY19 |
| H.012861 | PREJEAN ROAD PAVEMENT PRESERVATION | Pavement Preservation | CONST | 382,800 | 348,000 | 34,800 | 306,240 | STP>200K | 76,560 | FY19 |
| H.012864 | LA 94/CARMEL DRIVE SIDEWALKS | Construct sidewalks | CONST | 543,000 | 493,636 | 49,364 | 434,400 | STP>200K | 108,600 | FY19 |
| H.013517 | E ST PETER ST SIDEWALKS | Sidewalk Construction | ENGR | 72,000 | NA | NA | 57,600 | STP>200K | 14,400 | FY19 |
| H.012867 | S LARRIVIERE RD: LA 92- CHEMIN METAIRIE | Add Center Turn Lane | CONST | 2,131,800 | 1,938,000 | 193,800 | 1,705,440 | STP>200K | 426,360 | FY19 |
| H.012868 | FORTUNE ROAD PAVEMENT PRESERVATION | Reconstruction and Overlay | ENGR/ENV | 130,000 | NA | NA | 104,000 | STP>200K | 26,000 | FY19 |
| H.013522 | S LEWIS ST WIDENING | Add Center Turn Lane | ENGR | 142,855 | NA | NA | 114,284 | STP>200K | 28,571 | FY19 |
| H.012018 | LAFAYETTE ADAPTIVE SIGNAL SYSTEM STUDY | Study for the feasibility of adaptive signal system | CONST | 3,707,000 | 3,370,000 | 337,000 | 3,336,300 | STP>200K | 370,700 | FY19 |
| H.012869 | LA 182 (UNIV) @ LA 723 (RENAUD) ROUNDABOUT | Construct Roundabout | ROW | 166,200 | NA | NA | 132,960 | STP>200K | 33,240 | FY19 |
| H.012871 | DÉTENTE ROAD PAVEMENT PRESERVATION | Reconstruction and Overlay | ENGR/ENV | 110,000 | NA | NA | 88,000 | STP>200K | 22,000 | FY19 |
| H.012870 | LA 93: I-10 RAMP - RENAUD | Add Turn Lanes | ROW | 200,000 | NA | NA | 160,000 | STP>200K | 40,000 | FY19 |
| | | <i>Subtotal</i> | | 19,419,580 | | | 15,842,423 | | 3,662,413 | |
| Total Funding for Program Year 2018-2019 | | | | 154,724,930 | | | 131,185,773 | | 23,624,413 | |

STATE HIGHWAY ELEMENT

TRANSPORTATION IMPROVEMENT PROGRAM

Lafayette Urbanized Area – (Financially Constrained)

FY 2020 (Begin Oct. 2019) State Project Highway Element

| State Project Number | Project Description | Proposed Improvement | Work Status | Total Cost | Cost estimate | Contingency 10% of cost estimate | Federal Share | Funding Source | Local Match (5-20%) | Let Date |
|---|---|---|-------------|-------------------|---------------|-------------------------------------|-------------------|----------------|---------------------|----------|
| (TAP>200K) | | | | | | | | | | |
| H.011231 | BERTRAND DR STRSCP IMPVT | Enhancements | CONST | 640,200 | 582,000 | 58,200 | 512,160 | TAP>200K | 128,040 | FY20 |
| | <i>Subtotal</i> | | | 640,200 | | | 512,160 | | 128,040 | |
| (HSIP) | | | | | | | | | | |
| H.003459 | ROUNDBABOUT on LA. 726 @ I-49 FRONTAGE RD. | Roundabout | CONST | 1,870,000 | 1,700,000 | 170,000 | 1,870,000 | HSIP | 0 | FY20 |
| | <i>Subtotal</i> | | | 1,870,000 | | | 1,870,000 | | 0 | |
| (STP URBAN>200) | | | | | | | | | | |
| H.009500 | 2040 PLAN IMPL & I-49 ACTION PLAN | Plan Development and Studies | N/A | 350,000 | NA | NA | 280,000 | STP>200k | 70,000 | FY 20 |
| H.013515 | LA 92: PAVEMENT PRESERVATION | Pavement Preservation | CONST | 2,475,000 | 2,250,000 | 225,000 | 1,980,000 | STP>200k | 495,000 | FY 20 |
| H.012868 | FORTUNE ROAD PAVEMENT PRESERVATION | Pavement Preservation | CONST | 1,122,000 | 1,020,000 | 102,000 | 897,600 | STP>200K | 224,400 | FY20 |
| H.012870 | LA 93: I-10 RAMP - RENAUD | Widening | CONST | 4,840,000 | 4,400,000 | 440,000 | 3,872,000 | STP>200K | 968,000 | FY20 |
| H.012869 | LA 182 (UNIV) @ LA 723 (RENAUD) ROUNDBABOUT | Construct Roundabout | CONST | 3,630,000 | 3,300,000 | 330,000 | 2,904,000 | STP>200K | 726,000 | FY20 |
| H.011904 | LA 182: ST DE PORRES-ALBERTSON PKWY | Rehabilitate and add continuous turn lane | CONST | 341,000 | 310,000 | 31,000 | 272,800 | STP>200K | 68,200 | FY20 |
| H.013303 | W MAIN STREET: S BERNARD TO CLARA | Rehabilitate and add continuous turn lane | CONST | 2,200,000 | 2,000,000 | 200,000 | 1,760,000 | STP>200K | 440,000 | FY20 |
| H.011231 | BERTRAND DR STRSCP IMPVT | Enhancements | CONST | 918,500 | 835,000 | 83,500 | 734,800 | STP>200K | 183,700 | FY20 |
| | <i>Subtotal</i> | | | 15,876,500 | | | 12,701,200 | | 3,175,300 | |
| Total Funding for Program Year 2019-2020 | | | | 18,386,700 | | | 15,083,360 | | 3,303,340 | |

STATE HIGHWAY ELEMENT

TRANSPORTATION IMPROVEMENT PROGRAM

Lafayette Urbanized Area – (Financially Constrained)

FY 2021 (Begin Oct. 2020) State Project Highway Element

| State Project Number | Project Description | Proposed Improvement | Work Status | Total Cost | Cost estimate | Contingency 10% of cost estimate | Federal Share | Funding Source | Local Match (5-20%) | Let Date |
|---|---|---|-------------|-------------------|---------------|-------------------------------------|-------------------|----------------|---------------------|----------|
| (NHPP) | | | | | | | | | | |
| H.012174 | I-10: Jeff PL - I-49 Slab & Embankment Slide repair | Slab & Embankment repair | CONST | 22,000,000 | 20,000,000 | 2,000,000 | 19,800,000 | NHPP | 4,400,000 | FY21 |
| H.009997 | US 167: JOHNSTON ST IMPROVEMENTS | Access Management | ROW | 1,391,186 | NA | NA | 1,112,949 | NHPP | 278,237 | FY21 |
| H.009997 | US 167: JOHNSTON ST IMPROVEMENTS | Access Management | UTIL | 1,750,000 | NA | NA | 1,400,000 | NHPP | 350,000 | FY21 |
| | | <i>Subtotal</i> | | 25,141,186 | | | 22,312,949 | | 5,028,237 | |
| (HSIPPEN) | | | | | | | | | | |
| H.009997 | US 167: JOHNSTON ST IMPROVEMENTS | Access Management | ROW | 1,391,186 | NA | NA | 1,391,186 | HSIPPEN | 0 | FY21 |
| H.009997 | US 167: JOHNSTON ST IMPROVEMENTS | Access Management | UTIL | 1,750,000 | NA | NA | 1,750,000 | HSIPPEN | 0 | FY21 |
| | | <i>Subtotal</i> | | 3,141,186 | | | 3,141,186 | | 0 | |
| (STPFLEX) | | | | | | | | | | |
| H.009997 | US 167: JOHNSTON ST IMPROVEMENTS | Access Management | ROW | 1,391,186 | NA | NA | 1,112,949 | STPFLEX | 278,237 | FY21 |
| H.009997 | US 167: JOHNSTON ST IMPROVEMENTS | Access Management | UTIL | 1,750,000 | NA | NA | 1,400,000 | STPFLEX | 350,000 | FY21 |
| | | <i>Subtotal</i> | | 3,141,186 | | | 2,512,949 | | 628,237 | |
| (STP URBAN>200) | | | | | | | | | | |
| H.009500 | 2040 PLAN IMPL & I-49 ACTION PLAN | Plan Development and Studies | N/A | 350,000 | NA | NA | 280,000 | STP>200k | 70,000 | FY21 |
| H.012871 | DÉTENTE ROAD PAVEMENT PRESERVATION | Reconstruction and Overlay | CONST | 1,375,000 | 1,250,000 | 125,000 | 1,100,000 | STP>200K | 275,000 | FY21 |
| H.013522 | S LEWIS ST WIDENING | Add Center Turn Lane | ROW | 50,000 | NA | NA | 40,000 | STP>200K | 10,000 | FY21 |
| H.013522 | S LEWIS ST WIDENING | Add Center Turn Lane | UTIL | 60,000 | NA | NA | 48,000 | STP>200K | 12,000 | FY21 |
| H.013517 | E ST PETER ST SIDEWALKS | Sidewalk Construction | CONST | 221,880 | 201,709 | 20,171 | 177,504 | STP>200K | 44,376 | FY21 |
| H.013304 | W MAIN STREET: CLARA TO ST DEPORRES | Rehabilitate and add continuous turn lane | CONST | 4,158,000 | 3,780,000 | 378,000 | 3,326,400 | STP>200K | 831,600 | FY21 |
| | | <i>Subtotal</i> | | 5,864,880 | | | 4,691,904 | | 1,172,976 | |
| Total Funding for Program Year 2020-2021 | | | | 37,288,439 | | | 32,658,988 | | 6,829,451 | |

STATE HIGHWAY ELEMENT

TRANSPORTATION IMPROVEMENT PROGRAM

Lafayette Urbanized Area – (Financially Constrained)

FY 2022 (Begin Oct. 2021) State Project Highway Element

| State Project Number | Project Description | Proposed Improvement | Work Status | Total Cost | Cost estimate | Contingency 10% of cost estimate | Federal Share | Funding Source | Local Match (5-20%) | Let Date |
|---|-----------------------------------|------------------------------|-------------|-------------------|---------------|-------------------------------------|-------------------|----------------|---------------------|----------|
| (STP URBAN>200) | | | | | | | | | | |
| H.009997 | US 167: JOHNSTON ST IMPROVEMENTS | Corridor Improvements | CONS | 1,809,292 | 1,644,811 | 164,481 | 1,447,434 | STP>200K | 361,858 | FY22 |
| H.013516 | LA 353 Pavement Preservation | Pavement Preservation | CONS | 3,300,000 | 3,000,000 | 300,000 | 2,640,000 | STP>200K | 660,000 | FY22 |
| H.009500 | 2040 PLAN IMPL & I-49 ACTION PLAN | Plan Development and Studies | N/A | 350,000 | NA | NA | 280,000 | STP>200k | 70,000 | FY22 |
| H.013522 | S LEWIS ST WIDENING | Add Center Turn Lane | CONS | 2,191,455 | 1,992,232 | 199,223 | 1,753,164 | STP>200K | 438,291 | FY22 |
| | | <i>Subtotal</i> | | 7,650,747 | | | 6,120,598 | | 1,530,149 | |
| (HSIPPEN) | | | | | | | | | | |
| H.009997 | US 167: JOHNSTON ST IMPROVEMENTS | Access Management | CONS | 3,314,350 | 3,013,045 | 301,305 | 3,314,350 | HSIPPEN | 0 | FY22 |
| | | <i>Subtotal</i> | | 3,314,350 | | | 3,314,350 | | 0 | |
| (NHPP) | | | | | | | | | | |
| H.009997 | US 167: JOHNSTON ST IMPROVEMENTS | Access Management | CONS | 3,314,350 | 3,013,045 | 301,305 | 2,651,480 | NHPP | 662,870 | FY22 |
| | | <i>Subtotal</i> | | 3,314,350 | | | 2,651,480 | | 662,870 | |
| (STPFLEX) | | | | | | | | | | |
| H.009997 | US 167: JOHNSTON ST IMPROVEMENTS | Access Management | CONS | 1,505,057 | 1,368,234 | 136,823 | 1,204,046 | STPFLEX | 301,011 | FY22 |
| | | <i>Subtotal</i> | | 1,505,057 | | | 1,204,046 | | 301,011 | |
| Total Funding for Program Year 2021-2022 | | | | 15,784,504 | | | 13,290,473 | | 2,494,030 | |

CALL FOR PROJECTS ELEMENT

STP >200K Project applications (2014 Solicitation cycle)

| Fiscal year | Project | Entity | Work task | Fed amount | Local Match amount | Total cost |
|----------------|---|----------------------|---------------------------|-------------|--------------------|---------------------|
| Fiscal year 15 | | | | | | |
| Fiscal year 16 | Westgate (La. 93) Overlay | Scott | Design | \$60,000 | \$15,000 | \$75,000 |
| | Apollo Rd. (La. 3168) Overlay | Scott | Design | \$24,000 | \$6,000 | \$30,000 |
| | Better Block Bertrand Dr. | Lafayette Cons Gov't | Design | \$160,000 | \$40,000 | \$200,000 |
| | Better Block Bertrand Dr. | Lafayette Cons Gov't | Environmental | \$160,000 | \$40,000 | \$200,000 |
| | I-49 Connector Corridor Plan | Lafayette Cons Gov't | Planning study | \$800,000 | \$200,000 | \$1,000,000 |
| | Non State Fed eligible roads (Lafayette Parish) | Lafayette Cons Gov't | Construction | \$800,000 | \$200,000 | \$1,000,000 |
| | Adaptive Signal control | Lafayette Cons Gov't | Construction/Installation | \$1,600,000 | \$400,000 | \$2,000,000 |
| | | | | | | \$4,505,000 |
| Fiscal year 17 | Westgate (La. 93) overlay | Scott | Construction | \$600,000 | \$150,000 | \$750,000 |
| | Better Block Bertrand Dr. | Lafayette Cons Gov't | Construction | \$1,280,000 | \$320,000 | \$1,600,000 |
| | St. Mary Street Sidewalks | Scott | Design | \$400,000 | \$100,000 | \$500,000 |
| | Cameron St. Overlay (U.S. 90) | Scott | Design | \$160,000 | \$40,000 | \$200,000 |
| | Apollo Rd. (La. 3168) Overlay | Scott | Construction | \$240,000 | \$60,000 | \$300,000 |
| | | | | | | \$3,350,000 |
| Fiscal year 18 | Cameron St. Overlay (U.S. 90) | Scott | Construction | \$1,600,000 | \$400,000 | \$2,000,000 |
| | St. Mary Street Sidewalks | Scott | Construction | \$3,200,000 | \$800,000 | \$4,000,000 |
| | Non State Fed eligible roads (Lafayette Parish) | Lafayette Cons Gov't | Construction | \$800,000 | \$200,000 | \$1,000,000 |
| | | | | | | \$7,000,000 |
| | | | | | Total: | \$14,855,000 |

CALL FOR PROJECTS ELEMENT

| STP >200K Project applications (2015 Solicitation cycle) | | | | | | |
|---|--------------------------------|--------------------------|---------------------------|-------------------|---------------------------|--------------------|
| <i>Fiscal year</i> | <i>Project</i> | <i>Entity</i> | <i>Work task</i> | <i>Fed amount</i> | <i>Local Match amount</i> | <i>Total cost</i> |
| Fiscal year 15 | | | | | | |
| Fiscal year 16 | | | | | | |
| Fiscal year 17 | Fortune Road overlay | Lafayette Cons Gov't | Construction | \$820,000 | \$205,000 | \$1,025,000 |
| | Main St. Development (Phase 1) | Lafayette Cons Gov't | Design | \$155,216 | \$38,804 | \$194,020 |
| | Interchange Lighting | Sunset/St. Landry Parish | Design | \$224,000 | \$56,000 | \$280,000 |
| | Ed. Broussard Rd. Sidewalks | Loreauville | Design | \$50,000 | \$12,500 | \$62,500 |
| | La. 86 lighting | Loreauville | Environmental/Design | \$9,200 | \$2,300 | \$11,500 |
| | La. 86 sidewalks | Loreauville | Environmental/Design | \$42,000 | \$10,500 | \$52,500 |
| | | | | | | \$1,625,520 |
| Fiscal year 18 | Main St. Development (Phase 1) | Lafayette Cons Gov't | Construction | \$1,940,200 | \$485,050 | \$2,425,250 |
| | Interchange Lighting | Sunset/St. Landry Parish | Construction | \$2,576,000 | \$644,000 | \$3,220,000 |
| | Ed. Broussard Rd. Sidewalks | Loreauville | Construction | \$366,000 | \$91,500 | \$457,500 |
| | La. 86 lighting | Loreauville | Construction | \$110,800 | \$27,700 | \$138,500 |
| | La. 86 sidewalks | Loreauville | Environmental/Design | \$298,000 | \$74,500 | \$372,500 |
| | | | | | | \$6,613,750 |
| La. 178 Overlay was submitted by Sunset. \$300,000. This road is classified as a local road and is not Fed aid eligible | | | | | Total: | \$8,239,270 |
| Horizon Years | | | | | | |
| Fiscal year 19 | Main St. Development (Phase 2) | Lafayette Cons Gov't | Environmental/Design | \$160,000 | \$40,000 | \$200,000 |
| | | | | | | \$200,000 |
| Fiscal year 20 | Main St. Development (Phase 2) | Lafayette Cons Gov't | Right Of Way/construction | \$3,379,224 | \$844,806 | \$4,224,030 |
| | | | | | | \$4,224,030 |
| | | | | | Total: | \$4,424,030 |

CALL FOR PROJECTS ELEMENT

| STP>200K Project applications (2016 Solicitation cycle) | | | | | | |
|---|--|--------------------------|---------------------------|-------------------|---------------------------|----------------------------|
| <i>Fiscal year</i> | <i>Project</i> | <i>Entity</i> | <i>Work Task</i> | <i>Fed Amount</i> | <i>Local Match Amount</i> | <i>Total Cost</i> |
| Fiscal year 15 | | | | | | |
| Fiscal year 16 | | | | | | |
| Fiscal Year 17 | La. 93 Widening (3 lane I-10 to Renaud) | City of Scott | Environmental/Engineering | \$320,000 | \$80,000 | \$400,000 |
| | Berard St. Overlay (La. 94 to Bridge St.) | City of Breaux Bridge | Engineering/Construction | \$467,057 | \$116,764 | \$583,821 |
| | Prejean Rd. Reconstruction (University to Carencro City Limits) | City of Carencro | Engineering | \$32,800 | \$8,200 | \$41,000 |
| | Carmel Rd. Sidewalks (Louisiana Ave. to Lake Martin Rd.) | LCG | Engineering | \$29,235 | \$7,309 | \$36,544 |
| | Larriviere Rd. Widening (La. 92 to Chemin Metairie) | City of Youngsville | Environmental/Engineering | \$211,200 | \$52,800 | \$264,000 |
| | Moss St. Corridor Study (Jefferson Blvd. to Railroad tracks) | LCG | Corridor Study | \$200,000 | \$50,000 | \$250,000 |
| | W. Congress St. Corridor Study (University to Pierce St.) | LCG | Corridor Study | \$160,000 | \$40,000 | \$200,000 |
| | University Ave. @ Renaud Roundabout | LCG | Engineering | \$173,280 | \$43,320 | \$216,600 |
| | Airport Rd. @ La. 675 Roundabout | Iberia Parish | Right of Way | \$51,200 | \$12,800 | \$64,000 |
| | W. Simcoe St. Corridor Study (University to Pierce St.) | LCG | Corridor Study | \$240,000 | \$60,000 | \$300,000 |
| | South College Sidewalks (Johnston St. to Pinhook) | LCG | Engineering | \$34,077 | \$8,519 | \$42,596 |
| | University Ave. Corridor Study (Renaud to Cameron St.) | LCG | Corridor Study | \$400,000 | \$100,000 | \$500,000 |
| | Rees St. Corridor Study (Latiolais Rd. to Bridge St.) | City of Breaux Bridge | Study | \$320,000 | \$80,000 | \$400,000 |
| La. 314 Overlay (La. 31 to La. 353) | St. Martin Parish | Engineering/Construction | \$108,000 | \$108,000 | \$216,000 | |
| | | | | | | \$3,514,561 |
| Fiscal Year 18 | Prejean Rd. Reconstruction (University to Carencro City Limits) | City of Carencro | Construction | \$278,400 | \$69,600 | \$348,000 |
| | Airport Rd. @ La. 675 Roundabout | Iberia Parish | Construction | \$2,000,000 | \$500,000 | \$2,500,000 |
| | University Ave. @ Renaud Roundabout | LCG | Right of Way | \$132,960 | \$33,240 | \$166,200 |
| | S. Bernard Rd. Widening (3 lane from Railroad to La. 182) | City of Broussard | Right of Way | \$28,800 | \$7,200 | \$36,000 |
| | | | | | | \$3,050,200 |
| | | | | | | Total: \$6,564,761 |
| Horizon Years | | | | | | |
| Fiscal Year 19 | La. 93 Widening (3 lane I-10 to Renaud) | City of Scott | Right of Way | \$160,000 | \$40,000 | \$200,000 |
| | S. Bernard Rd. Widening (3 lane from Railroad to La. 182) | City of Broussard | Construction | \$3,520,000 | \$880,000 | \$4,400,000 |
| | Détente Rd. (Patch and Overlay from Chemin Metairie to Chemin Agreeable) | City of Youngsville | Environmental/Engineering | \$88,000 | \$22,000 | \$110,000 |
| | University Ave. @ Renaud Roundabout | LCG | Construction | \$2,640,000 | \$660,000 | \$3,300,000 |
| | La. 182 Widening (3 lane from S. Bernard to Clara St.) | City of Broussard | Construction | \$1,360,000 | \$340,000 | \$1,700,000 |
| | Larriviere Rd. Widening (La. 92 to Chemin Metairie) | City of Youngsville | Construction | \$1,550,400 | \$387,600 | \$1,938,000 |
| | Fortune Rd. Overlay (Bonin Rd. to La. 89) | City of Youngsville | Environmental/Engineering | \$104,000 | \$26,000 | \$130,000 |
| | Carmel Rd. Sidewalks (Louisiana Ave. to Lake Martin Rd.) | LCG | Construction | \$365,440 | \$91,360 | \$456,800 |
| South College Sidewalks (Johnston St. to Pinhook) | LCG | Construction | \$425,950 | \$106,488 | \$532,438 | |
| | | | | | | \$12,767,238 |
| Fiscal Year 20 | Fortune Rd. Overlay (Bonin Rd. to La. 89) | City of Youngsville | Construction | \$816,000 | \$204,000 | \$1,020,000 |
| | La. 93 Widening (3 lane I-10 to Renaud) | City of Scott | Right of Way | \$3,520,000 | \$880,000 | \$4,400,000 |
| | | | | | | \$5,420,000 |
| Fiscal Year 21 | Détente Rd. (Patch and Overlay from Chemin Metairie to Chemin Agreeable) | City of Youngsville | Construction | \$1,000,000 | \$250,000 | \$1,250,000 |
| | | | | | | \$1,250,000 |
| | | | | | | Total: \$26,001,999 |

CALL FOR PROJECTS ELEMENT

STP>200K Project applications (2017 Solicitation cycle)

| <i>Fiscal year</i> | <i>Project</i> | <i>Entity</i> | <i>Work Task</i> | <i>Fed Amount</i> | <i>Local Match Amount</i> | <i>Total Cost</i> |
|-----------------------|---|-------------------|---------------------------|-------------------|---------------------------|---------------------|
| <i>Fiscal year 15</i> | | | | | | |
| <i>Fiscal year 16</i> | | | | | | |
| <i>Fiscal year 17</i> | | | | | | |
| Fiscal Year 18 | LaNeuville @ Bonin Roundabout | City of Broussard | Environmental/Engineering | \$80,000 | \$20,000 | \$100,000 |
| | Pierce @ W. Congress Roundabout | LCG | Environmental/Engineering | \$141,836 | \$35,459 | \$177,295 |
| | Roundabout La. 93 @ La. 182 in Sunset | St. Landry/Sunset | Environmental/Engineering | \$160,000 | \$40,000 | \$200,000 |
| | | | | | | \$477,295 |
| | | | | | Total: | \$477,295 |
| Horizon Years | | | | | | |
| Fiscal Year 19 | St. Peter St. Sidewalks | City of Carencro | Engineering | \$58,146 | \$14,536 | \$72,682 |
| | S. Lewis St. Widening - Approximate location at the intersection of Admiral Doyle | Iberia Parish | Environmental/Engineering | \$333,710 | \$83,427 | \$417,137 |
| | LCG Pavement Markings on Fed Aid Non State Routes | LCG | Construction | \$400,000 | \$100,000 | \$500,000 |
| | Frontage Rd. extension (La. 14 to La. 329, North side) | New Iberia | Engineering | \$80,000 | \$20,000 | \$100,000 |
| | | | | | | \$1,089,819 |
| Fiscal Year 20 | La. 92 Pavement Preservation (U.S. 167 to La. 343) | Vermilion Parish | Construction | \$1,800,000 | \$450,000 | \$2,250,000 |
| | | | | | | \$2,250,000 |
| Fiscal Year 21 | St. Peter St. Sidewalks | City of Carencro | Construction | \$161,367 | \$40,342 | \$201,709 |
| | S. Lewis St. Widening - Approximate location at the intersection of Admiral Doyle | Iberia Parish | Right of Way | \$40,000 | \$10,000 | \$50,000 |
| | | | | | | \$251,709 |
| Fiscal Year 22 | LCG Pavement Markings on Fed Aid Non State Routes | LCG | Construction | \$400,000 | \$100,000 | \$500,000 |
| | S. Lewis St. Widening - Approximate location at the intersection of Admiral Doyle | Iberia Parish | Construction | \$1,420,986 | \$355,246 | \$1,776,232 |
| | Electric Buses | LCG | Bus Purchase | \$1,280,000 | \$320,000 | \$1,600,000 |
| | La. 353 Pavement Preservation (Vermilion River Bridge to Rookery Road) | St. Martin Parish | Construction | \$2,400,000 | \$600,000 | \$3,000,000 |
| | Frontage Rd. extension (La. 14 to La. 329, North side) | New Iberia | Construction | \$800,000 | \$200,000 | \$1,000,000 |
| | | | | | | \$7,876,232 |
| | | | | | Total: | \$11,945,055 |

LINE ITEM ELEMENT

| TRANSPORTATION IMPROVEMENT PROGRAM | | | | | |
|---|---|-------------|---------------------|---------------------|---------------------|
| Acadiana MPO Urbanized Area - (Financially Constrained) | | | | | |
| FY 2019 (Begin Oct. 2018) STATE PROJECT HIGHWAY ELEMENT (OTHER/GENERIC) | | | | | |
| State Project Number | Project Description | Work Status | Total Cost | Federal Share | Funding Source |
| Line Item L.000038 | Planning, Training Research | Feasibility | 2,400 | 1,920 | STPFlex |
| Line Item L.000040 | Federal Bridge Inspection | Const | 420,000 | 336,000 | STPFlex |
| Line Item L.000046 | Miscellaneous STP Enhancement Projects | Const | 825,000 | 660,000 | TAP>200k |
| Line Item L.000047 | Miscellaneous National Trails Projects | Const | 167,800 | 134,240 | RTP |
| Line Item L.000048 | Scenic Byways of LA | Const | 26,700 | 21,360 | NSB |
| Line Item L.000050 | LA Public Lands Highway Program | Const | 400,000 | 320,000 | FLH |
| Line Item L.000051 | Overlay or surface repair on Interstate | Const | 2,320,000 | 1,856,000 | NHPP |
| Line Item L.000053 | Statewide Overlay Program | Const | 10,000,000 | 8,000,000 | STPFlex |
| Line Item L.000054 | Road Preventive Maintenance Program | Const | 954,000 | 763,200 | STPFlex |
| Line Item L.000055 | Railroad Crossing Improvements | Const | 752,000 | 601,600 | STCash, STPFlex |
| Line Item L.000056 | Miscellaneous Hazard Elimination Program | Const | 3,860,000 | 3,088,000 | HSIP |
| Line Item L.000057 | Soft Side Safety | Feasibility | 507,000 | 507,000 | HSIPPEN, HSIP |
| Line Item L.000060 | Local Roads Safety Program | Const | 230,940 | 230,940 | HSIPPEN, HSIP |
| Line Item L.000061 | Safe Routes to Public Places Program | Const | 417,400 | 417,400 | HSIPPEN |
| Line Item L.000062 | Motorist Assistance Patrol (MAP) | Const | 376,000 | 300,800 | NHPP, STP>200k |
| Line Item L.000063 | Traffic Control Devices Program | Const | 1,471,000 | 1,176,800 | STPFLEX |
| Line Item L.000064 | Transportation Systems Management | Const | 779,000 | 623,200 | NHPP, STPFLEX |
| Line Item L.000065 | ITS Systems (Statewide) | Const | 893,000 | 714,400 | NHPP, STPFlex |
| Line Item L.000067 | Interstate Lighting, Electrical Projects | Const | 290,000 | 232,000 | NHPP |
| Line Item L.000068 | Access Management Projects | Const | 1,042,630 | 834,104 | NHPP, HSIP, STPFLEX |
| Line Item L.000069 | Road Transfer Program | Const | 2,234,000 | 1,787,200 | STPFlex, NFA |
| Line Item L.000071 | Weigh State Rehabilitation/Upgrade | Const | 52,300 | 41,840 | NHPP |
| Line Item L.000072 | Moveable Bridge Program | Const | 178,080 | 142,464 | STPFlex |
| Line Item L.000073 | Urgent Bridge Repair/Replacement | Const | 575,800 | 460,640 | STPFlex |
| Line Item L.000074 | Bridge Preventive Maintenance | Const | 1,365,500 | 1,092,400 | STPFlex, NHPP |
| Line Item L.000075 | Bridge Painting Program | Const | 730,000 | 584,000 | STPFlex, NHPP |
| Line Item L.000076 | On System Bridge Program | Const | 8,511,200 | 6,808,960 | STPFlex |
| Line Item L.000077 | Bridge Scour Analysis | Const | 8,000 | 6,400 | NHPP |
| Line Item L.000078 | Off-System Bridge Replacement Program | Const | 2,946,000 | 2,356,800 | FBROff |
| Line Item L.000079 | Bridge Discretionary Program | Const | 9,600 | 7,680 | BDP |
| Line Item L.000080 | Misc Federal Discretionary Projects | Const | 16,000 | 12,800 | FLH |
| Line Item L.000081 | Various Demo Projects | Const | 480,000 | 384,000 | Demo |
| Line Item L.000082 | Misc Statewide TCSP Projects | Const | 168,000 | 134,400 | TCSP |
| Line Item L.000083 | Payback for Advance Construct | Const | 1,640,000 | 1,312,000 | STPFlex, NHPP |
| Line Item L.000084 | Modified Project Agreement | Const | 960,000 | 768,000 | STPFlex |
| Line Item L.000085 | Advanced Traffic Management Center | Const | 16,000 | 12,800 | CM |
| Line Item L.000087 | Stage 0 and Feasibility Studies | Feasibility | 359,000 | 287,200 | STPFlex |
| Line Item L.000092 | DBE Supportive Services | Feasibility | 24,000 | 19,200 | DBE/SS |
| Line Item L.000093 | Statewide Congestion Mitigation | Const | 408,000 | 326,400 | CM |
| Line Item L.000094 | Urban Transit(Include Transfer to Agencies) | Const | 786,000 | 628,800 | STP>200K, STPFlex |
| YEARLY TOTAL OF LINE ITEMS | | | \$47,202,350 | \$37,992,948 | |

LINE ITEM ELEMENT

| TRANSPORTATION IMPROVEMENT PROGRAM | | | | | |
|---|---|-------------|---------------------|---------------------|---------------------|
| Acadiana MPO Urbanized Area - (Financially Constrained) | | | | | |
| FY 2020 (Begin Oct. 2019) STATE PROJECT HIGHWAY ELEMENT (OTHER/GENERIC) | | | | | |
| State Project Number | Project Description | Work Status | Total Cost | Federal Share | Funding Source |
| Line Item L.000038 | Planning, Training Research | Feasibility | 2,400 | 1,920 | STPFlex |
| Line Item L.000040 | Federal Bridge Inspection | Const | 420,000 | 336,000 | STPFlex |
| Line Item L.000046 | Miscellaneous STP Enhancement Projects | Const | 825,000 | 660,000 | TAP>200k |
| Line Item L.000047 | Miscellaneous National Trails Projects | Const | 167,800 | 134,240 | RTP |
| Line Item L.000048 | Scenic Byways of LA | Const | 26,700 | 21,360 | NSB |
| Line Item L.000050 | LA Public Lands Highway Program | Const | 400,000 | 320,000 | FLH |
| Line Item L.000051 | Overlay or surface repair on Interstate | Const | 2,320,000 | 1,856,000 | NHPP |
| Line Item L.000053 | Statewide Overlay Program | Const | 10,000,000 | 8,000,000 | STPFlex |
| Line Item L.000054 | Road Preventive Maintenance Program | Const | 954,000 | 763,200 | STPFlex |
| Line Item L.000055 | Railroad Crossing Improvements | Const | 752,000 | 601,600 | STCash, STPFlex |
| Line Item L.000056 | Miscellaneous Hazard Elimination Program | Const | 3,860,000 | 3,088,000 | HSIP |
| Line Item L.000057 | Soft Side Safety | Feasibility | 507,000 | 507,000 | HSIPPEN, HSIP |
| Line Item L.000060 | Local Roads Safety Program | Const | 230,940 | 230,940 | HSIPPEN, HSIP |
| Line Item L.000061 | Safe Routes to Public Places Program | Const | 417,400 | 417,400 | HSIPPEN |
| Line Item L.000062 | Motorist Assistance Patrol (MAP) | Const | 376,000 | 300,800 | NHPP, STP>200k |
| Line Item L.000063 | Traffic Control Devices Program | Const | 1,471,000 | 1,176,800 | STPFLEX |
| Line Item L.000064 | Transportation Systems Management | Const | 779,000 | 623,200 | NHPP, STPFLEX |
| Line Item L.000065 | ITS Systems (Statewide) | Const | 893,000 | 714,400 | NHPP, STPFlex |
| Line Item L.000067 | Interstate Lighting, Electrical Projects | Const | 290,000 | 232,000 | NHPP |
| Line Item L.000068 | Access Management Projects | Const | 1,042,630 | 834,104 | NHPP, HSIP, STPFLEX |
| Line Item L.000069 | Road Transfer Program | Const | 2,234,000 | 1,787,200 | STPFlex, NFA |
| Line Item L.000071 | Weigh State Rehabilitation/Upgrade | Const | 52,300 | 41,840 | NHPP |
| Line Item L.000072 | Moveable Bridge Program | Const | 178,080 | 142,464 | STPFlex |
| Line Item L.000073 | Urgent Bridge Repair/Replacement | Const | 575,800 | 460,640 | STPFlex |
| Line Item L.000074 | Bridge Preventive Maintenance | Const | 1,365,500 | 1,092,400 | STPFlex, NHPP |
| Line Item L.000075 | Bridge Painting Program | Const | 730,000 | 584,000 | STPFlex, NHPP |
| Line Item L.000076 | On System Bridge Program | Const | 8,511,200 | 6,808,960 | STPFlex |
| Line Item L.000077 | Bridge Scour Analysis | Const | 8,000 | 6,400 | NHPP |
| Line Item L.000078 | Off-System Bridge Replacement Program | Const | 2,946,000 | 2,356,800 | FBROff |
| Line Item L.000079 | Bridge Discretionary Program | Const | 9,600 | 7,680 | BDP |
| Line Item L.000080 | Misc Federal Discretionary Projects | Const | 16,000 | 12,800 | FLH |
| Line Item L.000081 | Various Demo Projects | Const | 480,000 | 384,000 | Demo |
| Line Item L.000082 | Misc Statewide TCSP Projects | Const | 168,000 | 134,400 | TCSP |
| Line Item L.000083 | Payback for Advance Construct | Const | 1,640,000 | 1,312,000 | STPFlex, NHPP |
| Line Item L.000084 | Modified Project Agreement | Const | 960,000 | 768,000 | STPFlex |
| Line Item L.000085 | Advanced Traffic Management Center | Const | 16,000 | 12,800 | CM |
| Line Item L.000087 | Stage 0 and Feasibility Studies | Feasibility | 359,000 | 287,200 | STPFlex |
| Line Item L.000092 | DBE Supportive Services | Feasibility | 24,000 | 19,200 | DBE/SS |
| Line Item L.000093 | Statewide Congestion Mitigation | Const | 408,000 | 326,400 | CM |
| Line Item L.000094 | Urban Transit(Include Transfer to Agencies) | Const | 786,000 | 628,800 | STP>200K, STPFlex |
| YEARLY TOTAL OF LINE ITEMS | | | \$47,202,350 | \$37,992,948 | |

LINE ITEM ELEMENT

| TRANSPORTATION IMPROVEMENT PROGRAM | | | | | |
|---|---|-------------|---------------------|---------------------|---------------------|
| Acadiana MPO Urbanized Area - (Financially Constrained) | | | | | |
| FY 2021 (Begin Oct. 2020) STATE PROJECT HIGHWAY ELEMENT (OTHER/GENERIC) | | | | | |
| State Project Number | Project Description | Work Status | Total Cost | Federal Share | Funding Source |
| Line Item L.000038 | Planning, Training Research | Feasibility | 2,400 | 1,920 | STPFlex |
| Line Item L.000040 | Federal Bridge Inspection | Const | 420,000 | 336,000 | STPFlex |
| Line Item L.000046 | Miscellaneous STP Enhancement Projects | Const | 825,000 | 660,000 | TAP>200k |
| Line Item L.000047 | Miscellaneous National Trails Projects | Const | 167,800 | 134,240 | RTP |
| Line Item L.000048 | Scenic Byways of LA | Const | 26,700 | 21,360 | NSB |
| Line Item L.000050 | LA Public Lands Highway Program | Const | 400,000 | 320,000 | FLH |
| Line Item L.000051 | Overlay or surface repair on Interstate | Const | 2,320,000 | 1,856,000 | NHPP |
| Line Item L.000053 | Statewide Overlay Program | Const | 10,000,000 | 8,000,000 | STPFlex |
| Line Item L.000054 | Road Preventive Maintenance Program | Const | 954,000 | 763,200 | STPFlex |
| Line Item L.000055 | Railroad Crossing Improvements | Const | 752,000 | 601,600 | STCash, STPFlex |
| Line Item L.000056 | Miscellaneous Hazard Elimination Program | Const | 3,860,000 | 3,088,000 | HSIP |
| Line Item L.000057 | Soft Side Safety | Feasibility | 507,000 | 507,000 | HSIPPEN, HSIP |
| Line Item L.000060 | Local Roads Safety Program | Const | 230,940 | 230,940 | HSIPPEN, HSIP |
| Line Item L.000061 | Safe Routes to Public Places Program | Const | 417,400 | 417,400 | HSIPPEN |
| Line Item L.000062 | Motorist Assistance Patrol (MAP) | Const | 376,000 | 300,800 | NHPP, STP>200k |
| Line Item L.000063 | Traffic Control Devices Program | Const | 1,471,000 | 1,176,800 | STPFLEX |
| Line Item L.000064 | Transportation Systems Management | Const | 779,000 | 623,200 | NHPP, STPFLEX |
| Line Item L.000065 | ITS Systems (Statewide) | Const | 893,000 | 714,400 | NHPP, STPFlex |
| Line Item L.000067 | Interstate Lighting, Electrical Projects | Const | 290,000 | 232,000 | NHPP |
| Line Item L.000068 | Access Management Projects | Const | 1,042,630 | 834,104 | NHPP, HSIP, STPFLEX |
| Line Item L.000069 | Road Transfer Program | Const | 2,234,000 | 1,787,200 | STPFlex, NFA |
| Line Item L.000071 | Weigh State Rehabilitation/Upgrade | Const | 52,300 | 41,840 | NHPP |
| Line Item L.000072 | Moveable Bridge Program | Const | 178,080 | 142,464 | STPFlex |
| Line Item L.000073 | Urgent Bridge Repair/Replacement | Const | 575,800 | 460,640 | STPFlex |
| Line Item L.000074 | Bridge Preventive Maintenance | Const | 1,365,500 | 1,092,400 | STPFlex, NHPP |
| Line Item L.000075 | Bridge Painting Program | Const | 730,000 | 584,000 | STPFlex, NHPP |
| Line Item L.000076 | On System Bridge Program | Const | 8,511,200 | 6,808,960 | STPFlex |
| Line Item L.000077 | Bridge Scour Analysis | Const | 8,000 | 6,400 | NHPP |
| Line Item L.000078 | Off-System Bridge Replacement Program | Const | 2,946,000 | 2,356,800 | FBROff |
| Line Item L.000079 | Bridge Discretionary Program | Const | 9,600 | 7,680 | BDP |
| Line Item L.000080 | Misc Federal Discretionary Projects | Const | 16,000 | 12,800 | FLH |
| Line Item L.000081 | Various Demo Projects | Const | 480,000 | 384,000 | Demo |
| Line Item L.000082 | Misc Statewide TCSP Projects | Const | 168,000 | 134,400 | TCSP |
| Line Item L.000083 | Payback for Advance Construct | Const | 1,640,000 | 1,312,000 | STPFlex, NHPP |
| Line Item L.000084 | Modified Project Agreement | Const | 960,000 | 768,000 | STPFlex |
| Line Item L.000085 | Advanced Traffic Management Center | Const | 16,000 | 12,800 | CM |
| Line Item L.000087 | Stage 0 and Feasibility Studies | Feasibility | 359,000 | 287,200 | STPFlex |
| Line Item L.000092 | DBE Supportive Services | Feasibility | 24,000 | 19,200 | DBE/SS |
| Line Item L.000093 | Statewide Congestion Mitigation | Const | 408,000 | 326,400 | CM |
| Line Item L.000094 | Urban Transit(Include Transfer to Agencies) | Const | 786,000 | 628,800 | STP>200K, STPFlex |
| YEARLY TOTAL OF LINE ITEMS | | | \$47,202,350 | \$37,992,948 | |

LINE ITEM ELEMENT

| TRANSPORTATION IMPROVEMENT PROGRAM | | | | | |
|---|---|-------------|---------------------|---------------------|---------------------|
| Acadiana MPO Urbanized Area - (Financially Constrained) | | | | | |
| FY 2022 (Begin Oct. 2021) STATE PROJECT HIGHWAY ELEMENT (OTHER/GENERIC) | | | | | |
| State Project Number | Project Description | Work Status | Total Cost | Federal Share | Funding Source |
| Line Item L.000038 | Planning, Training Research | Feasibility | 2,400 | 1,920 | STPFlex |
| Line Item L.000040 | Federal Bridge Inspection | Const | 420,000 | 336,000 | STPFlex |
| Line Item L.000046 | Miscellaneous STP Enhancement Projects | Const | 825,000 | 660,000 | TAP>200k |
| Line Item L.000047 | Miscellaneous National Trails Projects | Const | 167,800 | 134,240 | RTP |
| Line Item L.000048 | Scenic Byways of LA | Const | 26,700 | 21,360 | NSB |
| Line Item L.000050 | LA Public Lands Highway Program | Const | 400,000 | 320,000 | FLH |
| Line Item L.000051 | Overlay or surface repair on Interstate | Const | 2,320,000 | 1,856,000 | NHPP |
| Line Item L.000053 | Statewide Overlay Program | Const | 10,000,000 | 8,000,000 | STPFlex |
| Line Item L.000054 | Road Preventive Maintenance Program | Const | 954,000 | 763,200 | STPFlex |
| Line Item L.000055 | Railroad Crossing Improvements | Const | 752,000 | 601,600 | STCash, STPFlex |
| Line Item L.000056 | Miscellaneous Hazard Elimination Program | Const | 3,860,000 | 3,088,000 | HSIP |
| Line Item L.000057 | Soft Side Safety | Feasibility | 507,000 | 507,000 | HSIPPEN, HSIP |
| Line Item L.000060 | Local Roads Safety Program | Const | 230,940 | 230,940 | HSIPPEN, HSIP |
| Line Item L.000061 | Safe Routes to Public Places Program | Const | 417,400 | 417,400 | HSIPPEN |
| Line Item L.000062 | Motorist Assistance Patrol (MAP) | Const | 376,000 | 300,800 | NHPP, STP>200k |
| Line Item L.000063 | Traffic Control Devices Program | Const | 1,471,000 | 1,176,800 | STPFLEX |
| Line Item L.000064 | Transportation Systems Management | Const | 779,000 | 623,200 | NHPP, STPFLEX |
| Line Item L.000065 | ITS Systems (Statewide) | Const | 893,000 | 714,400 | NHPP, STPFlex |
| Line Item L.000067 | Interstate Lighting, Electrical Projects | Const | 290,000 | 232,000 | NHPP |
| Line Item L.000068 | Access Management Projects | Const | 1,042,630 | 834,104 | NHPP, HSIP, STPFLEX |
| Line Item L.000069 | Road Transfer Program | Const | 2,234,000 | 1,787,200 | STPFlex, NFA |
| Line Item L.000071 | Weigh State Rehabilitation/Upgrade | Const | 52,300 | 41,840 | NHPP |
| Line Item L.000072 | Moveable Bridge Program | Const | 178,080 | 142,464 | STPFlex |
| Line Item L.000073 | Urgent Bridge Repair/Replacement | Const | 575,800 | 460,640 | STPFlex |
| Line Item L.000074 | Bridge Preventive Maintenance | Const | 1,365,500 | 1,092,400 | STPFlex, NHPP |
| Line Item L.000075 | Bridge Painting Program | Const | 730,000 | 584,000 | STPFlex, NHPP |
| Line Item L.000076 | On System Bridge Program | Const | 8,511,200 | 6,808,960 | STPFlex |
| Line Item L.000077 | Bridge Scour Analysis | Const | 8,000 | 6,400 | NHPP |
| Line Item L.000078 | Off-System Bridge Replacement Program | Const | 2,946,000 | 2,356,800 | FBROff |
| Line Item L.000079 | Bridge Discretionary Program | Const | 9,600 | 7,680 | BDP |
| Line Item L.000080 | Misc Federal Discretionary Projects | Const | 16,000 | 12,800 | FLH |
| Line Item L.000081 | Various Demo Projects | Const | 480,000 | 384,000 | Demo |
| Line Item L.000082 | Misc Statewide TCSP Projects | Const | 168,000 | 134,400 | TCSP |
| Line Item L.000083 | Payback for Advance Construct | Const | 1,640,000 | 1,312,000 | STPFlex, NHPP |
| Line Item L.000084 | Modified Project Agreement | Const | 960,000 | 768,000 | STPFlex |
| Line Item L.000085 | Advanced Traffic Management Center | Const | 16,000 | 12,800 | CM |
| Line Item L.000087 | Stage 0 and Feasibility Studies | Feasibility | 359,000 | 287,200 | STPFlex |
| Line Item L.000092 | DBE Supportive Services | Feasibility | 24,000 | 19,200 | DBE/SS |
| Line Item L.000093 | Statewide Congestion Mitigation | Const | 408,000 | 326,400 | CM |
| Line Item L.000094 | Urban Transit(Include Transfer to Agencies) | Const | 786,000 | 628,800 | STP>200K, STPFlex |
| YEARLY TOTAL OF LINE ITEMS | | | \$47,202,350 | \$37,992,948 | |

LINE ITEM ELEMENT

| TRANSPORTATION IMPROVEMENT PROGRAM | | | | | |
|--|--|-----------|--|------------|---------------------|
| Acadiana MPO Urbanized Area - (Financially Constrained) | | | | | |
| FY'S 2019-2022 (Begin Oct. 2018 end Sept. 2022) LINE ITEM PROJECTS | | | | | |
| State Project Number | Line Item description | Project # | Project description | Parish | Total Cost |
| Line Item L.000038 | Planning, Training Research | | | | |
| Line Item L.000040 | Federal Bridge Inspection | | | | |
| Line Item L.000046 | Miscellaneous STP Enhancement Projects | | | | |
| Line Item L.000047 | Miscellaneous National Trails Projects | | | | |
| Line Item L.000048 | Scenic Byways of LA | | | | |
| Line Item L.000050 | LA Public Lands Highway Program | | | | |
| Line Item L.000051 | Overlay or surface repair on Interstate | | | | |
| | | H.013247 | I-10 RAMPS @ BUTTE LA ROSE, Embankment and Overlay | St. Martin | 1,200,000 |
| | | H.013131 | I-10 @ BUTTE LAROSE BARRIER RAIL REPAIR | St. Martin | 50,000 |
| Line Item L.000053 | Statewide Overlay Program | | | | |
| | | H.012558 | LA 182: End one way couplet - US 167; Overlay | St. Landry | \$2,440,000 |
| | | H.013198 | US 190 EB & WB; MPRR OPASS - LA 742, Overlay | St. Landry | \$6,450,000 |
| | | H.013200 | US 190 (EB); LA 742 - BAYOU COURTABLEU, Overlay | St. Landry | \$3,075,000 |
| | | H.012585 | LA 347: LA 740 - 1.35 MI S LA 31, Overlay | St. Landry | \$3,200,000 |
| | | H.012574 | LA 96: LA 182 - .56 MI. W. OF LA 31, Overlay | St. Martin | \$3,687,000 |
| | | H.012130 | LA 347: LA 328 - LA 686, Overlay | St. Martin | \$3,376,000 |
| | | H.013327 | LA 336-1; .19 MI SW LA 31- LA 31, Overlay | St. Martin | \$100,000 |
| | | H.012286 | LA 339; .41 MI W LA 182- LA 182, Overlay | Lafayette | \$675,000 |
| | | H.012980 | LA 3073; US 167- LA 3095 | Lafayette | \$4,200,000 |
| | | H.009629 | US 90 (EB); RR JCT-JCT US 90BUS (PINHOOK) PAVEMENT REHAB | Lafayette | \$8,813,000 |
| | | H.011932 | LA 89-1; N IBERIA ST - HEART D FARM RD (RT); Overlay | Lafayette | \$750,000 |
| | | H.010207 | LA 94: LA 353 - LA 328, Overlay | Lafayette | \$3,195,000 |
| | | H.013097 | LA 93: 1.53 MI S US 90-US 90 | Lafayette | \$1,380,000 |
| | | H.013360 | LA 93: US 90 - BENOIT PATIN RD | Lafayette | \$700,000 |
| | | H.012997 | LA 343: VERMILION PL - .6 MI S US 90 | Lafayette | \$617,000 |
| | | H.012923 | LA 91: LA 3067 - W JCT ST LANDRY PL, Thin Overlay | Lafayette | \$2,236,000 |
| Line Item L.000054 | Road Preventive Maintenance Program | | | | |
| Line Item L.000055 | Railroad Crossing Improvements | | | | |
| | | H.009861 | BNSF (NEW IBERIA) LA 14/CENTER FRENCH ST. TRACK WORK | Iberia | \$1,200,000 |
| | | H.009891 | BNSF (NEW IBERIA) WEEKS ST. | Iberia | \$350,000 |
| | | H.013333 | LA 89-1; BNSF RR XING (LAFAYETTE) REPLACE RR X-ING SURFACE | Lafayette | \$240,000 |
| Line Item L.000056 | Miscellaneous Hazard Elimination Program | | | | |
| | | H.011495 | US 90: RAMPS @ LA 88 ROUNDABOUTS | Iberia | \$5,423,000 |
| | | H.012393 | LA 98: ROUNDABOUT AT MILLS STREET | Lafayette | \$2,668,000 |
| | | H.012890 | LA 3073: MEDIAN IMPROVEMENTS ADDING LTL & MED OPEN | Lafayette | \$120,000 |
| | | H.012611 | US 167 @ CHALMETTE/I-49 HURR. CROSSOVER OFFSET TURN LANES | Lafayette | \$400,000 |
| | | H.012914 | LA 3073: AMBASSADOR @ BONIN IMPROVEMENTS EXTEND TURN LANE | Lafayette | \$400,000 |
| SUBTOTAL OF LINE ITEMS | | | | | \$56,945,000 |

LINE ITEM ELEMENT

| TRANSPORTATION IMPROVEMENT PROGRAM | | | | | |
|--|---|----------|--|------------|---------------------|
| Acadiana MPO Urbanized Area - (Financially Constrained) | | | | | |
| FY'S 2019-2022 (Begin Oct. 2018 end Sept. 2022) LINE ITEM PROJECTS | | | | | |
| Line Item L.000057 | Soft Side Safety | | | | |
| Line Item L.000060 | Local Roads Safety Program | | | | |
| | | H.012800 | LOCAL ROADS HFST | Lafayette | \$9,000 |
| Line Item L.000061 | Safe Routes to Public Places Program | | | | |
| | | H.010100 | PESSON ELEMENTARY SIDEWALKS; SIDEWALK CONSTRUCTION | Iberia | \$296,000 |
| | | H.013089 | MARTIN STREET SIDEWALKS | St. Martin | \$3,000 |
| | | H.006538 | LAFYT CONS GOVT SIDEWALKS | Lafayette | \$528,000 |
| Line Item L.000062 | Motorist Assistance Patrol (MAP) | | | | |
| Line Item L.000063 | Traffic Contol Devices Program | | | | |
| | | H.011929 | I-49: WASHINGTON TO AVOYELLES LINE SIGNING & RELATED WORK | St. Landry | \$1,200,000 |
| Line Item L.000064 | Transportation Systems Management | | | | |
| Line Item L.000065 | ITS Systems (Statewide) | | | | |
| | | H.013256 | I-10 ITS SCOTT TO LAKE CHARLES | Lafayette | \$825,000 |
| | | H.011511 | US 190 ITS DEPLOYMENT | St. Landry | \$2,317,000 |
| Line Item L.000067 | Interstate Lighting, Electrical Projects | | | | |
| Line Item L.000068 | Access Management Projects | | | | |
| Line Item L.000069 | Road Transfer Program | | | | |
| | | H.011781 | LA 675 & LA 87 IMP. IN NEW IBERIA (RT), Overlay | Iberia | \$3,487,000 |
| | | H.011971 | LA 176; DT LFT ST. & SW. CONS. PHASE 3, STREETScape, OVERLAY | Lafayette | \$612,000 |
| | | H.011748 | LA 731 & LA 731-S IMPROVEMENTS | Lafayette | \$825,000 |
| Line Item L.000071 | Weigh State Rehabilitation/Upgrade | | | | |
| Line Item L.000072 | Moveable Bridge Program | | | | |
| Line Item L.000073 | Urgent Bridge Repair/Replacement | | | | |
| Line Item L.000074 | Bridge Preventive Maintenance | | | | |
| | | H.011989 | US 90: LDRR AND LA329 OVERPASS BRIDGE REHABILITATION | Iberia | \$3,037,000 |
| Line Item L.000075 | Bridge Painting Program | | | | |
| Line Item L.000076 | On System Bridge Program | | | | |
| | | H.011808 | LA 10: Palmetto Company Canal Bridge: Bridge replacement | St. Landry | \$1,725,000 |
| | | H.002176 | LA 10 BRIDGES | St. Landry | \$5,220,000 |
| | | H.010005 | VERMILION RIVER MOVABLE BRS REHAB (HBI) | Lafayette | \$8,486,000 |
| | | | | | |
| | | | | | |
| Line Item L.000077 | Bridge Scour Analysis | | | | |
| Line Item L.000078 | Off-System Bridge Replacement Program | | | | |
| | | H.013291 | JUDSON WALSH DRIVE OVER DRAINAGE BAYOU BRIDGE REPLCMNT. | St. Landry | \$346,000 |
| | | H.002151 | BAYOU PARC PERDU AND CREEK BRIDGES BRIDGE REPLCMNT. | Lafayette | \$1,595,000 |
| | | H.010557 | LAJAUNIE RD/ LATERAL 1 BAYOU ST. CLAIR BRIDGE REPLCMNT. | Lafayette | \$663,000 |
| | | H.012880 | HAPSBURG LANE/COULEE BRIDGE REPLACEMENT | Lafayette | \$742,000 |
| | | H.002735 | BAYOU VERMILION BRIDGE REPLACEMENT | Lafayette | \$2,763,000 |
| Line Item L.000079 | Bridge Discretionary Program | | | | |
| Line Item L.000080 | Misc Federal Discretionary Projects | | | | |
| Line Item L.000081 | Various Demo Projects | | | | |
| Line Item L.000082 | Misc Statewide TCSP Projects | | | | |
| Line Item L.000083 | Payback for Advance Construct | | | | |
| Line Item L.000084 | Modified Project Agreement | | | | |
| Line Item L.000085 | Advanced Traffic Management Center | | | | |
| Line Item L.000087 | Stage 0 and Feasibility Studies | | | | |
| | | H.013459 | US 167: ELSIE STREET TO GILBERT DRIVE STUDY TO 3 LANE | St. Landry | \$50,000 |
| Line Item L.000092 | DBE Supportive Services | | | | |
| Line Item L.000093 | Statewide Congestion Mitigation | | | | |
| Line Item L.000094 | Urban Transit(Include Transfer to Agencies) | | | | |
| | TOTAL OF LINE ITEMS | | | | \$91,674,000 |

TRANSIT ELEMENT

| TRANSPORTATION IMPROVEMENT PROGRAM | | | | | | |
|--|---|----------------|--------------------|--------------------|-------------|---------------------|
| Lafayette Urbanized Area – (Financially Constrained) | | | | | | |
| FY2019 (BEGIN OCT. 2018) PUBLIC TRANSIT ELEMENT PROGRAM OF ELEMENTS | | | | | | |
| Project Number | Project Description | Section Number | Local Share | FTC Federal Share | State Share | Total |
| SECTION 5307 FORMULA GRANT | | | | | | |
| | Operating Assistance | | 1,400,000 | 1,400,000 | 0 | 2,800,000 |
| | Bus and Bus Related Activities: | | | | | |
| | Bus Replacement | | 131,250 | 743,750 | 0 | 875,000 |
| | Non-fixed Route ADA Paratransit Service | | 53,750 | 215,000 | 0 | 268,750 |
| | Terminal, Preventative Maint | | 68,750 | 275,000 | 0 | 343,750 |
| | Passenger Amenities | | 2,500 | 10,000 | 0 | 12,500 |
| | <i>Subtotal by Funding Source (FTA)</i> | | <i>\$1,656,250</i> | <i>\$2,643,750</i> | | <i>\$4,300,000</i> |
| SECTION 5339 CAPITAL ASSISTANCE | | | | | | |
| | Bus Replacement | | 93,750 | 375,000 | 0 | 468,750 |
| | <i>Subtotal by Funding Source (FTA)</i> | | <i>\$93,750</i> | <i>\$375,000</i> | <i>\$0</i> | <i>\$468,750</i> |
| LoNo GRANT | | | | | | |
| | Low Emission Bus | | 162,500 | 650,000 | 0 | 812,500 |
| | Alternate Fuel Infrastructure | | 10,000 | 40,000 | 0 | 50,000 |
| | CNG Facility Renovation | | 125,000 | 500,000 | 0 | 625,000 |
| | <i>Subtotal by Funding Source (FTA)</i> | | <i>\$297,500</i> | <i>\$1,190,000</i> | | <i>\$1,487,500</i> |
| BUS AND BUS FACILITIES INVESTMENT | | | | | | |
| | Bus Replacement | | 175,000 | 700,000 | 0 | 875,000 |
| | Transit Parking Facility | | 300,000 | 1,200,000 | 0 | 1,500,000 |
| | Transit Substation | | 450,000 | 1,800,000 | 0 | 2,250,000 |
| | <i>Subtotal by Funding Source (FTA)</i> | | <i>\$925,000</i> | <i>\$3,700,000</i> | | <i>\$4,625,000</i> |
| SECTION 5310 ENHANCED MOBILITY OF SENIORS AND INDIVIDUALS WITH DISABILITIES | | | | | | |
| | Lafayette Council on Aging Operating Assistance | | 6,740 | 6,740 | 0 | 13,480 |
| | Arc of Acadiana - Lafayette Operating Assistance | | 28,763 | 28,763 | 0 | 57,526 |
| | Arc of Acadiana - Lafayette 16-2B Bus Replacement | | 9,845 | 55,791 | | 65,636 |
| | Iberia Parish Council on Aging Operating Assistance | | 15,000 | 15,000 | 0 | 30,000 |
| | St. Mary ARC, Inc/Center of Hope | | 35,000 | 35,000 | | 70,000 |
| | St. Mary ARC - 12-2B Bus Replacement | | 9,134 | 51,762 | 0 | 60,896 |
| | <i>Subtotal by Funding Source (FTA)</i> | | <i>\$104,483</i> | <i>\$193,055</i> | <i>0</i> | <i>\$297,538</i> |
| SECTION 5311 RURAL TRANSIT ASSISTANCE GRANT | | | | | | |
| | Evangeline/City of Ville Platte Council on Aging | | 227,040 | 227,040 | 0 | 454,080 |
| | Iberia Parish SMILE | | 250,178 | 250,178 | 0 | 500,356 |
| | St. Landry Parish Government Council on Aging | | 204,717 | 204,717 | 0 | 409,434 |
| | St. Martin Parish Government Council on Aging | | 150,000 | 150,000 | 0 | 300,000 |
| | St. Mary/City of Franklin Community Action Agency | | 131,170 | 131,170 | 0 | 262,340 |
| | Vermillion Policy Jury | | 91,900 | 91,900 | 0 | 183,800 |
| | <i>Subtotal by Funding Source (FTA)</i> | | <i>\$1,055,005</i> | <i>\$1,055,005</i> | <i>0</i> | <i>\$2,110,010</i> |
| Grand Total by Funding Source (FTA) | | | \$4,131,988 | \$9,156,810 | 0 | \$13,288,798 |

TRANSIT ELEMENT

| TRANSPORTATION IMPROVEMENT PROGRAM | | | | | | |
|--|---|----------------|--------------------|--------------------|-------------|---------------------|
| Lafayette Urbanized Area – (Financially Constrained) | | | | | | |
| FY2020 (BEGIN OCT. 2019) PUBLIC TRANSIT ELEMENT PROGRAM OF ELEMENTS | | | | | | |
| Project Number | Project Description | Section Number | Local Share | FTC Federal Share | State Share | Total |
| SECTION 5307 FORMULA GRANT | | | | | | |
| | Operating Assistance | | 1,400,000 | 1,400,000 | 0 | 2,800,000 |
| | Bus and Bus Related Activities: | | | | | |
| | Bus Replacement | | 131,250 | 743,750 | 0 | 875,000 |
| | Non-fixed Route ADA Paratransit Service | | 53,750 | 215,000 | 0 | 268,750 |
| | Terminal, Preventative Maint | | 68,750 | 275,000 | 0 | 343,750 |
| | Passenger Amenities | | 2,500 | 10,000 | 0 | 12,500 |
| | <i>Subtotal by Funding Source (FTA)</i> | | <i>\$1,656,250</i> | <i>\$2,643,750</i> | | <i>\$4,300,000</i> |
| SECTION 5339 CAPITAL ASSISTANCE | | | | | | |
| | Bus Replacement | | 93,750 | 375,000 | 0 | 468,750 |
| | <i>Subtotal by Funding Source (FTA)</i> | | <i>\$93,750</i> | <i>\$375,000</i> | <i>\$0</i> | <i>\$468,750</i> |
| LoNo GRANT | | | | | | |
| | Low Emission Bus | | 175,000 | 700,000 | 0 | 875,000 |
| | Alternate Fuel Infrastructure | | 10,000 | 40,000 | 0 | 50,000 |
| | CNG Facility Renovation | | 125,000 | 500,000 | 0 | 625,000 |
| | <i>Subtotal by Funding Source (FTA)</i> | | <i>\$310,000</i> | <i>\$1,240,000</i> | | <i>\$1,550,000</i> |
| BUS AND BUS FACILITIES INVESTMENT | | | | | | |
| | Bus Replacement | | 175,000 | 700,000 | 0 | 875,000 |
| | Transit Parking Facility | | 300,000 | 1,200,000 | 0 | 1,500,000 |
| | Transit Substation | | 450,000 | 1,800,000 | 0 | 2,250,000 |
| | <i>Subtotal by Funding Source (FTA)</i> | | <i>\$925,000</i> | <i>\$3,700,000</i> | | <i>\$4,625,000</i> |
| SECTION 5310 ENHANCED MOBILITY OF SENIORS AND INDIVIDUALS WITH DISABILITIES | | | | | | |
| | Lafayette Council on Aging Operating Assistance | | 6,740 | 6,740 | 0 | 13,480 |
| | Arc of Acadiana - Lafayette Operating Assistance | | 28,763 | 28,763 | 0 | 57,526 |
| | Arc of Acadiana - Lafayette 16-2B Bus Replacement | | 9,845 | 55,791 | | 65,636 |
| | Iberia Parish Council on Aging Operating Assistance | | 15,000 | 15,000 | 0 | 30,000 |
| | St. Mary ARC, Inc/Center of Hope | | 35,000 | 35,000 | | 70,000 |
| | St. Mary ARC - 12-2B Bus Replacement | | 9,134 | 51,762 | 0 | 60,896 |
| | <i>Subtotal by Funding Source (FTA)</i> | | <i>\$104,483</i> | <i>\$193,055</i> | <i>0</i> | <i>\$297,538</i> |
| SECTION 5311 RURAL TRANSIT ASSISTANCE GRANT | | | | | | |
| | Evangeline/City of Ville Platte Council on Aging | | 227,040 | 227,040 | 0 | 454,080 |
| | Iberia Parish SMILE | | 250,178 | 250,178 | 0 | 500,356 |
| | St. Landry Parish Government Council on Aging | | 204,717 | 204,717 | 0 | 409,434 |
| | St. Martin Parish Government Council on Aging | | 150,000 | 150,000 | 0 | 300,000 |
| | St. Mary/City of Franklin Community Action Agency | | 131,170 | 131,170 | 0 | 262,340 |
| | Vermilion Policy Jury | | 91,900 | 91,900 | 0 | 183,800 |
| | <i>Subtotal by Funding Source (FTA)</i> | | <i>\$1,055,005</i> | <i>\$1,055,005</i> | <i>0</i> | <i>\$2,110,010</i> |
| Grand Total by Funding Source (FTA) | | | \$4,144,488 | \$9,206,810 | 0 | \$13,351,298 |

TRANSIT ELEMENT

| TRANSPORTATION IMPROVEMENT PROGRAM | | | | | | |
|--|---|----------------|--------------------|--------------------|-------------|---------------------|
| Lafayette Urbanized Area – (Financially Constrained) | | | | | | |
| FY2021 (BEGIN OCT. 2020) PUBLIC TRANSIT ELEMENT PROGRAM OF ELEMENTS | | | | | | |
| Project Number | Project Description | Section Number | Local Share | FTC Federal Share | State Share | Total |
| SECTION 5307 FORMULA GRANT | | | | | | |
| | Operating Assistance | | 1,400,000 | 1,400,000 | 0 | 2,800,000 |
| | Bus and Bus Related Activities: | | | | | |
| | Bus Replacement | | 135,938 | 770,313 | 0 | 906,250 |
| | Non-fixed Route ADA Paratransit Service | | 53,750 | 215,000 | 0 | 268,750 |
| | Terminal, Preventative Maint | | 68,750 | 275,000 | 0 | 343,750 |
| | Passenger Amenities | | 2,500 | 10,000 | 0 | 12,500 |
| | <i>Subtotal by Funding Source (FTA)</i> | | <i>\$1,660,938</i> | <i>\$2,670,313</i> | | <i>\$4,331,250</i> |
| SECTION 5339 CAPITAL ASSISTANCE | | | | | | |
| | Bus Replacement | | 93,750 | 375,000 | 0 | 468,750 |
| | <i>Subtotal by Funding Source (FTA)</i> | | <i>\$93,750</i> | <i>\$375,000</i> | <i>\$0</i> | <i>\$468,750</i> |
| LoNo GRANT | | | | | | |
| | Low Emission Bus | | 162,500 | 650,000 | 0 | 812,500 |
| | Alternate Fuel Infrastructure | | 10,000 | 40,000 | 0 | 50,000 |
| | CNG Facility Renovation | | 125,000 | 500,000 | 0 | 625,000 |
| | <i>Subtotal by Funding Source (FTA)</i> | | <i>\$297,500</i> | <i>\$1,190,000</i> | | <i>\$1,487,500</i> |
| BUS AND BUS FACILITIES INVESTMENT | | | | | | |
| | Bus Replacement | | 181,250 | 725,000 | 0 | 906,250 |
| | Transit Parking Facility | | 300,000 | 1,200,000 | 0 | 1,500,000 |
| | Transit Substation | | 450,000 | 1,800,000 | 0 | 2,250,000 |
| | <i>Subtotal by Funding Source (FTA)</i> | | <i>\$931,250</i> | <i>\$3,725,000</i> | | <i>\$4,656,250</i> |
| SECTION 5310 ENHANCED MOBILITY OF SENIORS AND INDIVIDUALS WITH DISABILITIES | | | | | | |
| | Lafayette Council on Aging Operating Assistance | | 6,740 | 6,740 | 0 | 13,480 |
| | Arc of Acadiana - Lafayette Operating Assistance | | 28,763 | 28,763 | 0 | 57,526 |
| | Arc of Acadiana - Lafayette 16-2B Bus Replacement | | 9,845 | 55,791 | | 65,636 |
| | Iberia Parish Council on Aging Operating Assistance | | 15,000 | 15,000 | 0 | 30,000 |
| | St. Mary ARC, Inc/Center of Hope | | 35,000 | 35,000 | | 70,000 |
| | St. Mary ARC - 12-2B Bus Replacement | | 9,134 | 51,762 | 0 | 60,896 |
| | <i>Subtotal by Funding Source (FTA)</i> | | <i>\$104,483</i> | <i>\$193,055</i> | <i>0</i> | <i>\$297,538</i> |
| SECTION 5311 RURAL TRANSIT ASSISTANCE GRANT | | | | | | |
| | Evangeline/City of Ville Platte Council on Aging | | 227,040 | 227,040 | 0 | 454,080 |
| | Iberia Parish SMILE | | 250,178 | 250,178 | 0 | 500,356 |
| | St. Landry Parish Government Council on Aging | | 204,717 | 204,717 | 0 | 409,434 |
| | St. Martin Parish Government Council on Aging | | 150,000 | 150,000 | 0 | 300,000 |
| | St. Mary/City of Franklin Community Action Agency | | 131,170 | 131,170 | 0 | 262,340 |
| | Vermilion Policy Jury | | 91,900 | 91,900 | 0 | 183,800 |
| | <i>Subtotal by Funding Source (FTA)</i> | | <i>\$1,055,005</i> | <i>\$1,055,005</i> | <i>0</i> | <i>\$2,110,010</i> |
| Grand Total by Funding Source (FTA) | | | \$4,142,925 | \$9,208,373 | 0 | \$13,351,298 |

TRANSIT ELEMENT

| TRANSPORTATION IMPROVEMENT PROGRAM | | | | | | |
|--|---|----------------|--------------------|--------------------|-------------|---------------------|
| Lafayette Urbanized Area – (Financially Constrained) | | | | | | |
| FY2022 (BEGIN OCT. 2021) PUBLIC TRANSIT ELEMENT PROGRAM OF ELEMENTS | | | | | | |
| Project Number | Project Description | Section Number | Local Share | FTC Federal Share | State Share | Total |
| SECTION 5307 FORMULA GRANT | | | | | | |
| | Operating Assistance | | 1,400,000 | 1,400,000 | 0 | 2,800,000 |
| | Bus and Bus Related Activities: | | | | | |
| | Bus Replacement | | 140,625 | 796,875 | 0 | 937,500 |
| | Non-fixed Route ADA Paratransit Service | | 53,750 | 215,000 | 0 | 268,750 |
| | Terminal, Preventative Maint | | 68,750 | 275,000 | 0 | 343,750 |
| | Passenger Amenities | | 2,500 | 10,000 | 0 | 12,500 |
| | <i>Subtotal by Funding Source (FTA)</i> | | <i>\$1,665,625</i> | <i>\$2,696,875</i> | | <i>\$4,362,500</i> |
| SECTION 5339 CAPITAL ASSISTANCE | | | | | | |
| | Bus Replacement | | 100,000 | 400,000 | 0 | 500,000 |
| | <i>Subtotal by Funding Source (FTA)</i> | | <i>\$100,000</i> | <i>\$400,000</i> | <i>\$0</i> | <i>\$500,000</i> |
| LoNo GRANT | | | | | | |
| | Low Emission Bus | | 181,250 | 725,000 | 0 | 906,250 |
| | Alternate Fuel Infrastructure | | 10,000 | 40,000 | 0 | 50,000 |
| | CNG Facility Renovation | | 125,000 | 500,000 | 0 | 625,000 |
| | <i>Subtotal by Funding Source (FTA)</i> | | <i>\$316,250</i> | <i>\$1,265,000</i> | | <i>\$1,581,250</i> |
| BUS AND BUS FACILITIES INVESTMENT | | | | | | |
| | Bus Replacement | | 187,500 | 750,000 | 0 | 937,500 |
| | Transit Parking Facility | | 300,000 | 1,200,000 | 0 | 1,500,000 |
| | Transit Substation | | 450,000 | 1,800,000 | 0 | 2,250,000 |
| | <i>Subtotal by Funding Source (FTA)</i> | | <i>\$937,500</i> | <i>\$3,750,000</i> | | <i>\$4,687,500</i> |
| SECTION 5310 ENHANCED MOBILITY OF SENIORS AND INDIVIDUALS WITH DISABILITIES | | | | | | |
| | Lafayette Council on Aging Operating Assistance | | 6,740 | 6,740 | 0 | 13,480 |
| | Arc of Acadiana - Lafayette Operating Assistance | | 28,763 | 28,763 | 0 | 57,526 |
| | Arc of Acadiana - Lafayette 16-2B Bus Replacement | | 9,845 | 55,791 | | 65,636 |
| | Iberia Parish Council on Aging Operating Assistance | | 15,000 | 15,000 | 0 | 30,000 |
| | St. Mary ARC, Inc/Center of Hope | | 35,000 | 35,000 | | 70,000 |
| | St. Mary ARC - 12-2B Bus Replacement | | 9,134 | 51,762 | 0 | 60,896 |
| | <i>Subtotal by Funding Source (FTA)</i> | | <i>\$104,483</i> | <i>\$193,055</i> | <i>0</i> | <i>\$297,538</i> |
| SECTION 5311 RURAL TRANSIT ASSISTANCE GRANT | | | | | | |
| | Evangeline/City of Ville Platte Council on Aging | | 227,040 | 227,040 | 0 | 454,080 |
| | Iberia Parish SMILE | | 250,178 | 250,178 | 0 | 500,356 |
| | St. Landry Parish Government Council on Aging | | 204,717 | 204,717 | 0 | 409,434 |
| | St. Martin Parish Government Council on Aging | | 150,000 | 150,000 | 0 | 300,000 |
| | St. Mary/City of Franklin Community Action Agency | | 131,170 | 131,170 | 0 | 262,340 |
| | Vermilion Policy Jury | | 91,900 | 91,900 | 0 | 183,800 |
| | <i>Subtotal by Funding Source (FTA)</i> | | <i>\$1,055,005</i> | <i>\$1,055,005</i> | <i>0</i> | <i>\$2,110,010</i> |
| Grand Total by Funding Source (FTA) | | | \$4,178,863 | \$9,359,935 | 0 | \$13,538,798 |

Major Non-State Road Projects

| TRANSPORTATION IMPROVEMENT PROGRAM Lafayette Urbanized Area – (Financially Constrained) FY 2019-2022(Quarter 3, 2018 Update) Regionally Significant Local Project Element | | | | | | |
|--|--------|---|-------------|-------------------|----------------|----------|
| *All projects listed on this document are under construction and on a Minor/ Principle Arterial | | | | | | |
| Local Project Number | Entity | Project Description | Work Status | Money allocated | Funding Source | Let Date |
| Lafayette Consolidated Government | | | | | | |
| 6 | LCG | E. Pont Des Mouton Rd. Widening (4 lane blvd. and 5 lane section) from I-49 to LA. Avenue | CONST | 11,812,000 | City Bonds | 2018 |
| 13 | LCG | Kaliste Saloom Road Widening (5 Lane) from Ambassador Caffery(La. 3073) to E. Broussard Rd. (La. 733) | CONST | 14,474,000 | City Bonds | 2018 |
| | | <i>Subtotal</i> | | 26,286,000 | | |

Appendix A:
The **TIP** Submittal Package

Order of documents:
TPC Resolution